



518/32 Civic Way Rouse Hill NSW

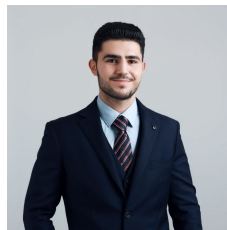
2 2 1

Discover the ultimate in modern living with this stunning 2-bedroom apartment located in the highly desirable 'Proximity' building in the heart of Rouse Hill. Offering an unbeatable combination of luxury, convenience, and privacy, this apartment is perfect for those seeking both comfort and a vibrant lifestyle.

Type : Apartment
Price : Contact Agent
View : <https://www.plusagency.com.au/sale/nsw/hills/rouse-hill/residential/apartment/8147739>

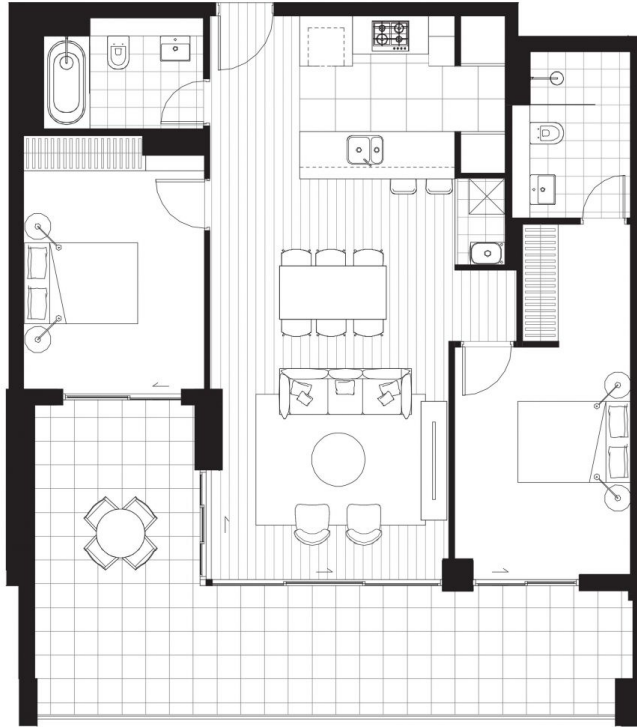
Key Features:

- **Uninterrupted District Views:** Enjoy sweeping, uninterrupted views from the comfort of your living room, with a north-east sunny aspect that fills the space with natural light.
- **Ideal Layout for Privacy:** Both bedrooms are separated, offering excellent privacy for families, roommates, or guests.



Adam Hosseini
0401 610 472

[For full version visit the website](https://www.plusagency.com.au)



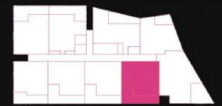
PLUS & NOTABLE

APARTMENT

518/32 Civic Way,
Rouse Hill

AREA

Total Strata Size 136 sqm



SITE PLAN

Disclaimer: This plan is presented in good faith and is to be used as a guide. It does not constitute an offer or contract. All area sizes indicated are approximate only. Positions of furniture, fittings and the like are not indicative of final positioning.