



**G06/25 Dawes Avenue Castle Hill NSW**

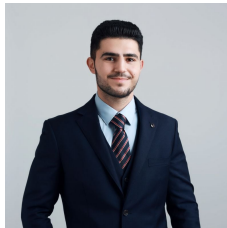
2 🛏 2 🚿 2 🚗

Discover unparalleled living at Unit G06/25 Dawes Ave, a brand-new double-storey townhouse that perfectly combines privacy, style, and convenience. Located in the heart of Castle Hill, this home offers a lifestyle of luxury, with every detail designed to impress.

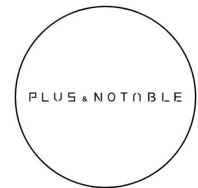
**Type** : Townhouse  
**Price** : Contact Agent  
**View** : <https://www.plusagency.com.au/sale/nsw/hills/castle-hill/residential/townhouse/8146308>

**Key Features:**

- Double-Storey Design: Enjoy the ultimate in privacy with separate living spaces on the ground floor and bedrooms upstairs. Ideal for those who love to entertain while maintaining a peaceful retreat.
- Customised Kitchen Finishes: The kitchen is the heart of the home, and here it truly shines with custom, unique finishes and a stunning 40mm stone benchtop, designed for the modern chef who appreciates style and functionality.

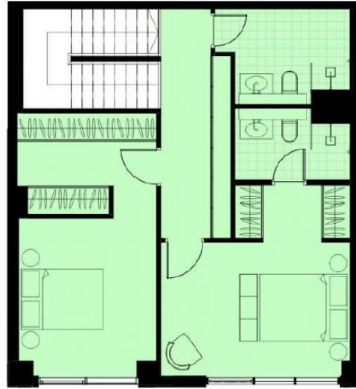


**Adam Hosseini**  
0401 610 472



**Plus Notable Sales**  
1300604177

[For full version visit the website](https://www.plusagency.com.au)



PLUS & NOTABLE

APARTMENT

G06/25 Dawes Avenue,  
Castle Hill

AREA

Total Strata Size 170 sqm



SITE PLAN

Disclaimer: This plan is presented in good faith and is to be used as a guide. It does not constitute an offer or contract. All area sizes indicated are approximate only. Positions of furniture, fittings and the like are not indicative of final positioning.