



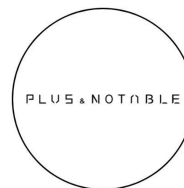
304/8 Marian Street Killara NSW

3 2 2

Set in a prestigious east-side location, just a 3-minute walk from Killara Train Station and surrounded by the serene beauty of Regimental Park, these two, and three-bedroom apartments offer a perfect blend of nature, convenience, and sophistication.

Type : Apartment
Price : Contact Agent
View : <https://www.plusagency.com.au/sale/nsw/north-s-hore-upper/killara/residential/apartment/8131219>

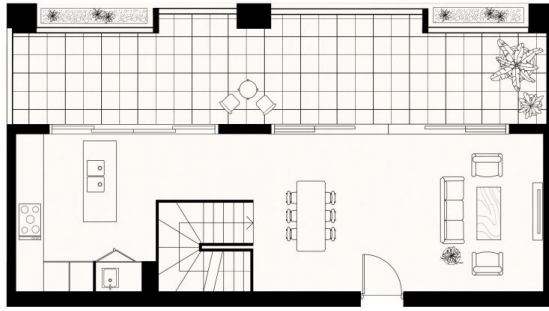
Meticulously crafted with a palette of exquisite materials and textures, The Luxe embodies modern elegance. Each residence boasts contemporary design, spacious balconies, and secure parking.



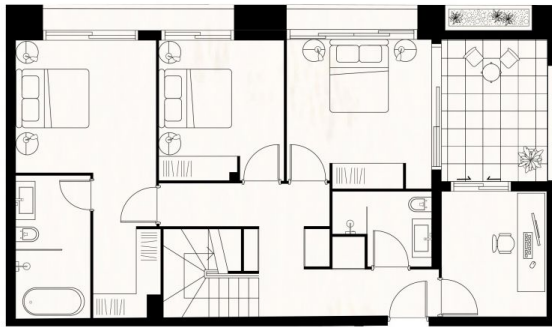
Located within the highly sought-after Killara Public and Killara High School catchments, The Luxe provides unbeatable convenience for families. Discover the epitome of refined living with The Luxe

Plus Notable Sales
1300604177

[For full version visit the website](https://www.plusagency.com.au)



L3



L2

PLUS
AGENCY

APARTMENT

304/8 Marian Street,
Killara, NSW 2071

AREA

Total Living Area: 173 m²
Total Strata Area: 208 m²



Disclaimer: This plan is presented in good faith and is to be used as a guide. It does not constitute an offer or contract. All area sizes indicated are approximate only. Positions of furniture, fittings and the like are not indicative of final positioning.