



AG05/53 Nancarrow Avenue Ryde NSW

1 1 1

This brilliantly master-planned shepherds bay community brings not only just a home but also a sophisticated lifestyle where amenities underneath the building and a lovely waterfront walk along the bayside. These new apartments are one of the best value waterfront apartments available in Sydney. Established on the Parramatta River, Shepherds Bays apartment offers not only the water views but also the foreshore gardens and other leisure options within the vicinity.

LOCATION

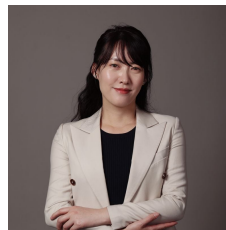
? Strategically convenient with just 20 minutes from Sydney CBD, 15 minutes to Paramatta CBD and moments' walk to Meadowbank train station, buses and ferry wharf.

? Close proximity to Sydney Olympic Park, Rhodes

Type : Apartment

Price : Contact Agent

View : <https://www.plusagency.com.au/sale/nsw/northern-suburbs/ryde/residential/apartment/8110097>

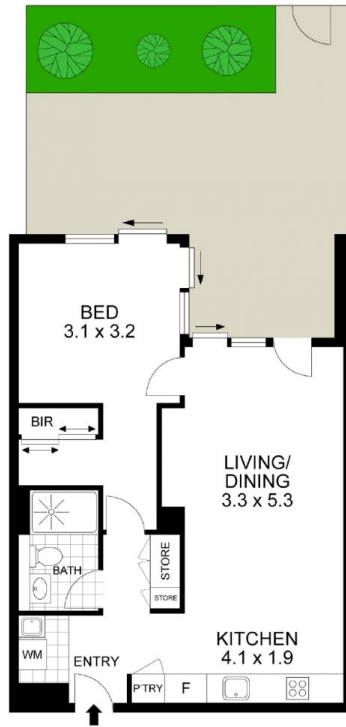
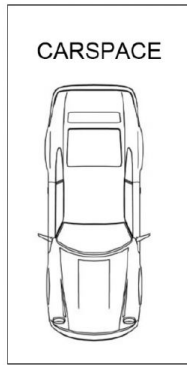


Fiona Hu
1300 572 155



Hunter Liu
1300 572 155

[For full version visit the website](https://www.plusagency.com.au)



Disclaimer:
This plan is presented in good faith and is to be used as a guide. It does not constitute an offer or contract. All area sizes indicated are approximate only. Positions of furniture, fittings and the like are not indicative of final positioning.

Lancaster
MEADOWBANK

APARTMENT

AG05/53 Nancarrow Ave,
Ryde NSW 2112

AREA

Total Strata Area: 105m²



HOLDMARK

PLUS
AGENCY