

**B504/53 Nancarrow Avenue Ryde NSW**

1 1 1

This brilliantly master-planned shepherds bay community brings not only just a home but also a sophisticated lifestyle where amenities underneath the building and a lovely waterfront walk along the bayside. These new apartments are one of the best value waterfront apartments available in Sydney. Established on the Parramatta River, Shepherds Bays apartment offers not only the water views but also the foreshore gardens and other leisure options within the vicinity.

**LOCATION**

? Strategically convenient with just 20 minutes from Sydney CBD, 15 minutes to Paramatta CBD and moments' walk to Meadowbank train station, buses and ferry wharf.

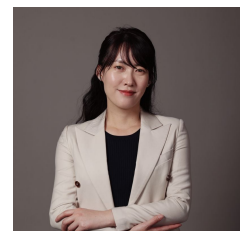
? Close proximity to Sydney Olympic Park, Rhodes Shopping Centre, Top Ryde shopping centre, Macquarie University and much more.

**Price** : Contact Agent

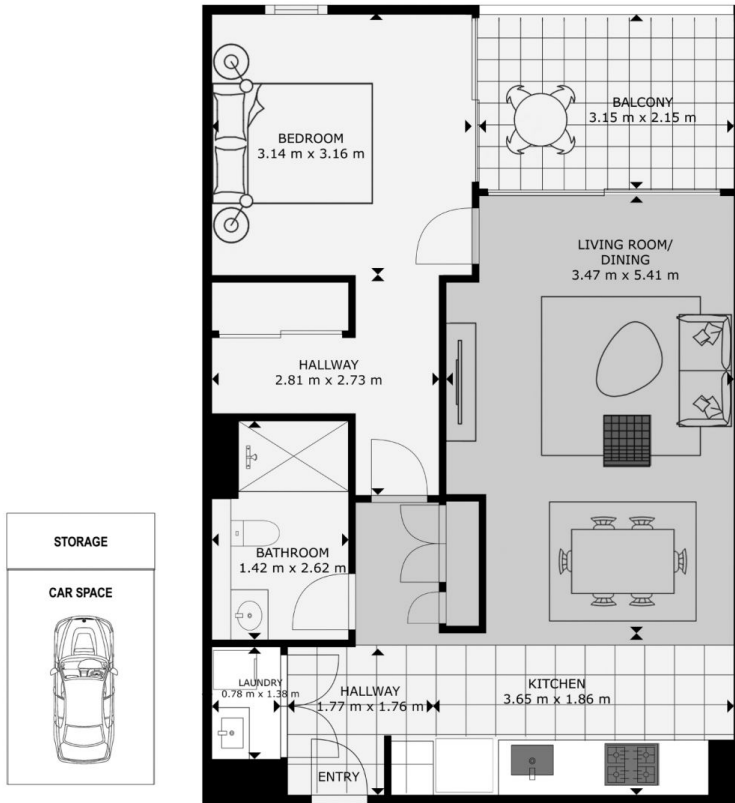
**View** : <https://www.plusagency.com.au/sale/nsw/northern-suburbs/ryde/residential/apartment/8110095>



**Hunter Liu**  
1300 572 155



**Fiona Hu**  
1300 572 155



Disclaimer:  
The plan is presented in good faith and is to be used as a guide. It does not constitute an offer or contract. All area sizes indicated are approximate only. Positions of furniture, fittings and the like are not indicative of final positioning.

**Lancaster**  
MEADOWBANK

**APARTMENT**

**B504**

53 Nancarrow Ave,  
Ryde NSW 2112

**AREA**

Total Area: Approx 73m<sup>2</sup>



**HOLDMARK**

**PLUS**  
AGENCY