



403/333 Liverpool Road Ashfield NSW

3 2 1

Located in the lively suburb of Ashfield, The Place features 28 exclusive, brand-new luxury apartments. Just 8 kilometers from Sydney's CBD, these residences provide the perfect balance of a peaceful retreat from city life while still offering convenient access to all amenities. Situated within a high-quality, modern, secure complex just 200 meters from the train station, you'll find shopping, dining, and entertainment options just steps from your front door.

Price : Contact Agent

View : <https://www.plusagency.com.au/sale/nsw/inner-west/ashfield/residential/apartment/8096968>

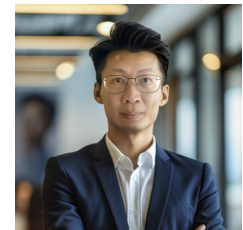
Now under construction, anticipated completion Sep 2024.

Design feature includes:

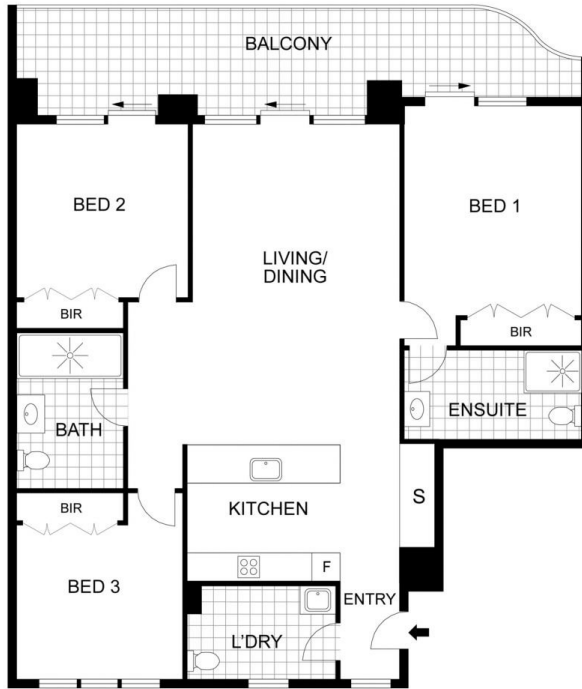
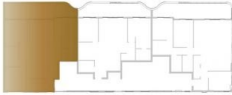
- Master bedroom with Ensuite and all bedrooms with built-in wardrobes
- Designer kitchen with stone benchtops, integrated Bosch gas cooktop, oven, ducted rangehood & dishwasher



Raymond Yu
1300 572 155



William Zhang
1300 572 155



PLUS
AGENCY

APARTMENT

403/317 Liverpool Road,
Ashfield, NSW 2131

AREA

Internal Area: 106m²
External Area: 24m²



Disclaimer: This plan is presented in good faith and is to be used as a guide. It does not constitute an offer or contract. All area sizes indicated are approximate only. Positions of furniture, fittings and the like are not indicative of final positioning.