



504/50-52 Belmore Street Burwood NSW

3 3 2

Blending once-in-a-millennium design perfection with urban chic, Genesis is a symphony of striking curvature, clean lines and natural materials.

Breathtaking detail that delights all the senses, this residential marvel is a symbiotic wonder of form and function with contemporary and classic stylings that breathe life into every apartment.

ENDLESS HORIZONS TO EXPLORE

Located in the heart of Sydney's cosmopolitan inner west, Genesis brings to life a myriad of dining, shopping and lifestyle opportunities. The possibilities for connection with your culturally rich community are infinite.

SPOILED WITH POSSIBILITIES

Price : \$ 2,110,000

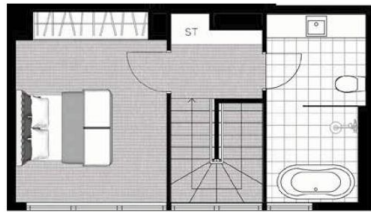
View : <https://www.plusagency.com.au/sale/nsw/inner-west/burwood/residential/apartment/8088864>



Anna Yushu Chung
1300 572 155



Plus Agency Ryde
1300 572 155



Disclaimer: Please note that this floor plan was produced prior to construction and is subject to council approval. The information herein is believed to be correct but is not guaranteed. Changes may be made during construction and dimensions, areas, fittings and specifications are subject change without notice in accordance with the provisions of the contract of sale. The furniture and furnishings depicted are not included with any sale and purchasers must refer to the contract for sale for the list of inclusions. The position of furniture and furnishings should not be taken to be indicative of final positions of power points, TV connection points and the like. Prospective purchasers must rely on their own enquiries. All graphics including the layout/giery layout, basins, kitchen equipment, balustrades and the like are indicative only. Bulkheads for services are not depicted. Floor plan is at an unspecified scale. All area sizes indicated are approximate only and are subject to final survey.



GENESIS

BURWOOD

3 Bed Penthouse

UNIT 504

| | |
|--------------------------|--------------------------|
| Bedroom | 3 |
| Bathroom | 3 |
| Car Space | 2 |
| Total Living Area | 125 m² |



PLUS
AGENCY