

## A204/12 Nancarrow Avenue Meadowbank NSW

1 1 1

The double-story one-bedroom unit at Pearl of the Bay features an elegant and spacious layout, perfect for comfortable living. On the ground floor, you'll find an open-plan living and dining area that seamlessly connects to a modern kitchen, equipped with high-quality appliances and ample storage space. Large windows and sliding glass doors lead out to a private courtyard, offering a serene outdoor space for relaxation or entertaining.

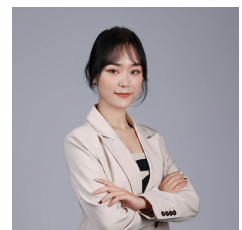
Upstairs, the generous bedroom provides a peaceful retreat, complete with built-in wardrobes for ample storage. The stylish bathroom features contemporary fixtures and finishes, ensuring a luxurious experience. This unit combines modern design with functional living, making it an ideal home in the vibrant community of Pearl of the Bay.

**Type** : Apartment

**View** : <https://www.plusagency.com.au/sale/nsw/northern-suburbs/meadowbank/residential/apartment/8031318>

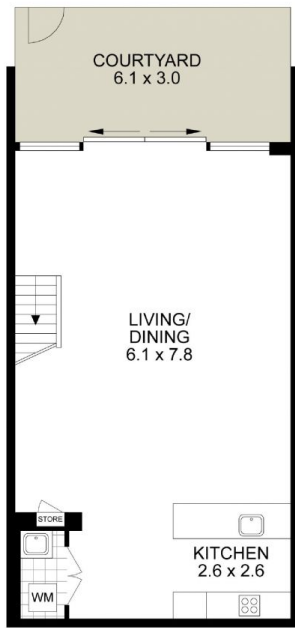


**Hunter Liu**  
1300 572 155

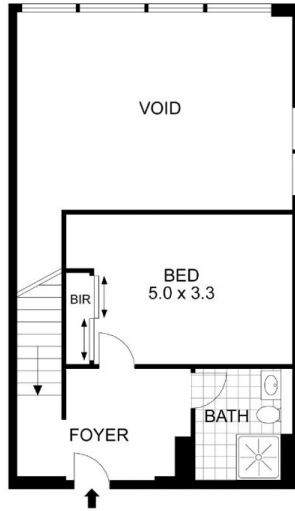


**Freya Fu**  
0404 390 929

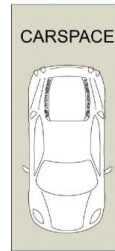
[For full version visit the website](https://www.plusagency.com.au)



GROUND FLOOR



FIRST FLOOR



PLUS  
AGENCY

## APARTMENT

A204/12 Nancarrow Ave  
Meadowbank NSW 2114

## AREA

Total Strata Size: 131m<sup>2</sup>



Disclaimer: This plan is presented in good faith and is to be used as a guide. It does not constitute an offer or contract. All area sizes indicated are approx. Inmate only. Positions of furniture, fittings, and the like are not indicative of final positioning.