



611/1015 Pacific Highway Roseville NSW

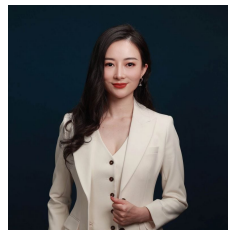
2 🛏 2 🚿 1 🚗

Reshaping the streetscape at a landmark address on the boundary of Roseville and Chatswood. Envisioned by BVN, the construction of this forward-thinking apartment collection is in the hands of Ceerose, known as a leading prestige building group with a reputation for delivering innovative property developments.

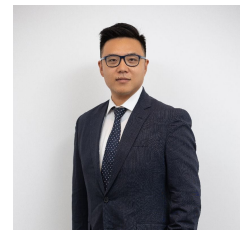
Seymours Residences spans across three buildings appearing as one striking low-rise complex, with a bold façade of smoked raw brick, concrete and glass already turning heads during the city commute. The secure island site integrates eight gardens for communal gatherings or quiet time, featuring two green rooftop terraces set with Chatswood's dazzling CBD as a backdrop.

Type : Apartment

View : <https://www.plusagency.com.au/sale/nsw/north-s-hore-upper/roseville/residential/apartment/7963110>



Fiona/Shuran Yang
0452 480 606



Joe/Jiangzhou Sun
1300 572 155

[For full version visit the website](https://www.plusagency.com.au)