

### 3107/500 Pacific Highway St Leonards NSW

3 2 2

Act now to seize your last chance to claim the ultra-spacious 3-bedroom apartment at The Landmark, St Leonards.

This generously proportioned residence has been meticulously crafted to offer ample space and natural light, accentuated by expansive floor-to-ceiling windows that capture the awe-inspiring views. Perfect for hosting guests, it boasts a wrap-around balcony, a distinct dining area, and captivating vistas.

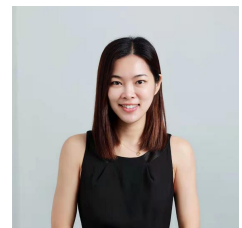
From the outside in, indulge in the opulence of residing in this architecturally striking vertical skyscraper, boasting tastefully finished designer interiors that showcase the sophistication of contemporary architecture.

[For full version visit the website](https://www.plusagency.com.au)

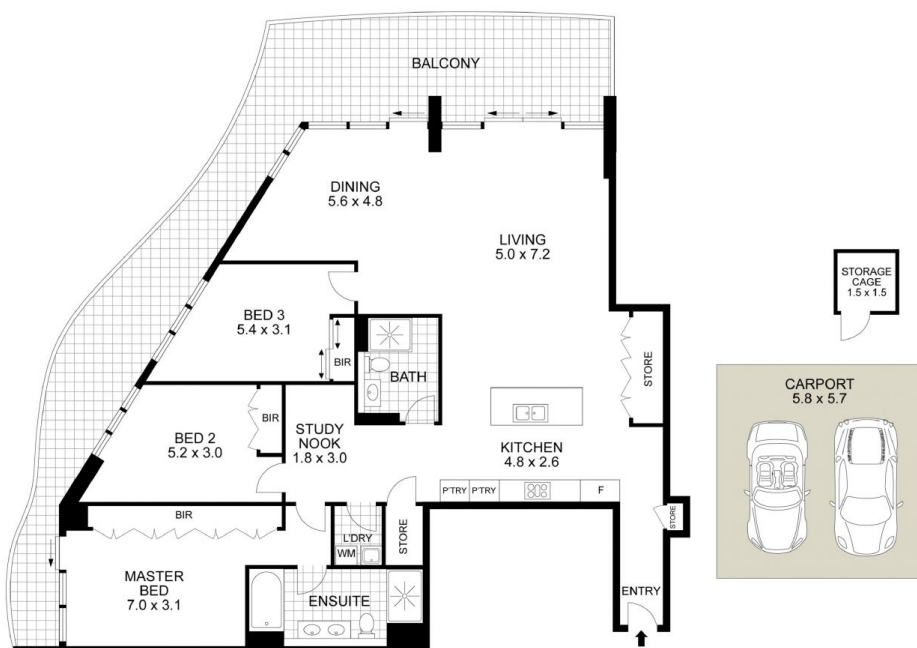
**Type** : Apartment  
**Price** : Contact Agent  
**View** : <https://www.plusagency.com.au/sale/nsw/north-sydney-lower/st-leonards/residential/apartment/7915765>



**Joe/Jiangzhou Sun**  
1300 572 155



**Stephenie Wong**  
1300 572 155



**PLUS**  
AGENCY

## APARTMENT

3107/500 Pacific Highway,  
St Leonards NSW 2065

## AREA

Total Strata Size: 206 m<sup>2</sup>



Disclaimer: This plan is presented in good faith and is to be used as a guide. It does not constitute an offer or contract. All area sizes indicated are approximate only. Positions of furniture, fittings and the like are not indicative of final positioning.