



502/230 Victoria Road Gladesville NSW

2 2 1

This modern two-bedroom apartment not only boasts contemporary design but also features a coveted northwest-facing balcony for breathtaking views.

Key Features:

- * Spacious two-bedroom layout
- * Modern kitchen with stainless steel appliances
- * Open-plan living and dining area
- * Northwest-facing balcony with stunning views
- * Secure parking space and storage cage
- * Convenient location near amenities and transport
- * Located in Building B of the development, with no frontage onto Victoria Road for a peaceful living environment

Type : Apartment

View : <https://www.plusagency.com.au/sale/nsw/northern-suburbs/gladesville/residential/apartment/7824825>



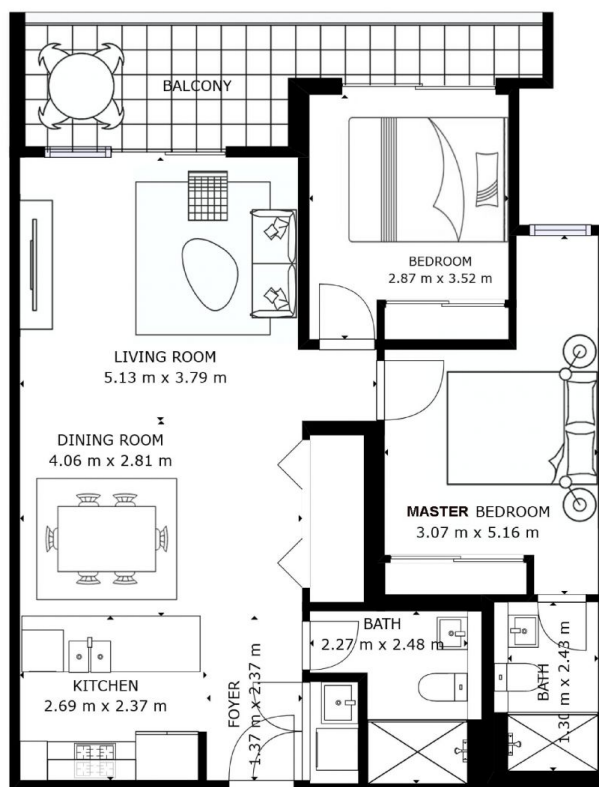
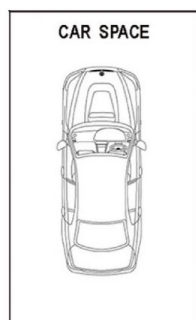
Hunter Liu
1300 572 155



Plus Agency Ryde
1300 572 155

[For full version visit the website](https://www.plusagency.com.au)

STORAGE



PLUS
AGENCY

APARTMENT

502/230 Victoria Road,
Gladesville NSW 2111

AREA

Total Strata Size: 104 m²



Disclaimer: This plan is presented in good faith and is to be used as a guide. It does not constitute an offer or contract. All area sizes indicated are approximate only. Positions of furniture, fittings and the like are not indicative of final positioning.