



**206/30 Alfred Street Milsons Point NSW**

2 2 1

Introducing a new standard of luxury living in Milsons Point, Aqualuna' architecturally striking low-rise boutique building is peacefully nestled amid waterside of Harbour Bridge.

Kitchen incorporate granite island benchtops, a combination of timber and neutral coloured joinery, brass plated tapware and quality Miele appliances. Bathrooms are beautifully finished with minimal aesthetic. In addition to the high quality custom brass plated tapware, there is abundance of storage and ambient LED lighting.

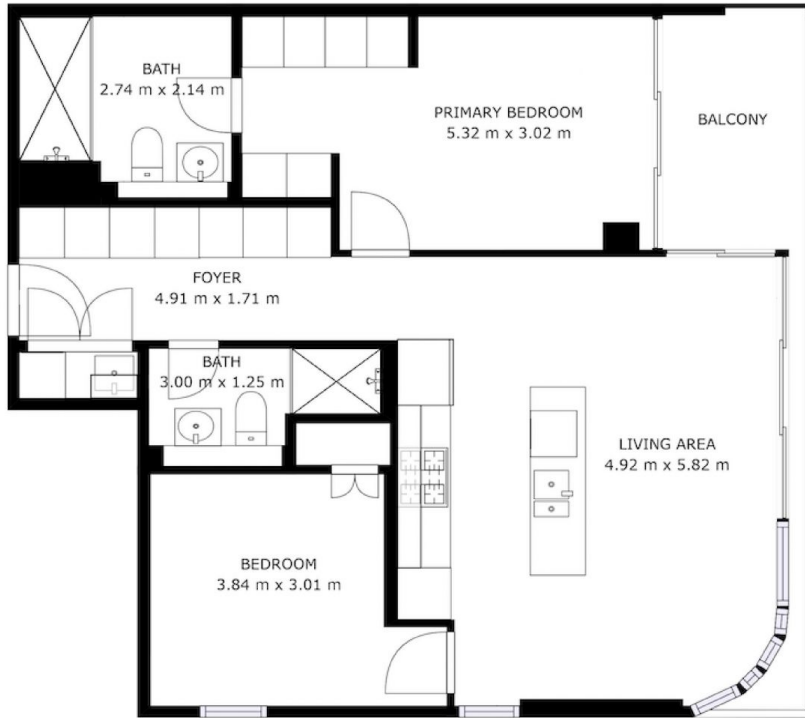
Designed to make the most of every corner aspect, the sophisticated interiors of Aqualuna's residence evoke a timeless luxury, with details providing elegant comfort. Designed by leading Architects, Koichi Takada. Aqualuna

**Type** : Apartment  
**View** : <https://www.plusagency.com.au/sale/nsw/north-s-hore-lower/milsons-point/residential/apartment/7810925>



**Stephanie Wong**  
1300 572 155

[For full version visit the website](https://www.plusagency.com.au)



**PLUS**  
AGENCY  
CREATED BY RENE PROPERTY GROUP

**APARTMENT**

206/30 Alfred Street,  
Milsons Point NSW 2061

**AREA**

Total Area: Approx 97 m<sup>2</sup>



Disclaimer:  
This plan is presented in good faith and is to be used as a guide. It does not constitute an offer or contract. All areas stated are approximate only. Positions of furniture, fittings and the like are not indicative of final positioning.