



1A Fitzsimmons Avenue Lane Cove North NSW

4 3 2

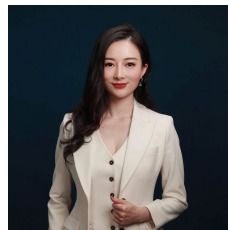
Built to exacting standards, this brand-new duplex provides an outstanding family home of contemporary style, space and quality. Just moments from Lane Cove's eclectic village where dining options, cafés and boutique shops delight.

This impressive duplex seamlessly integrates all the benefits of a Lane Cove lifestyle with a peaceful sanctuary feel, easy access to Upper and Lower Northshore business centres and the City, the convenience of the nearby parks, picturesque bushland trails and highly regarded Mowbray Public School combine to make this modern duplex a great choice for young couples, families or empty nesters alike.

Capturing the lifestyle where convenience and serenity

Type : Semi Detached

View : <https://www.plusagency.com.au/sale/nsw/north-shore-lower/lane-cove-north/residential/semi-detached/7792164>



Fiona/Shuran Yang
0452 480 606



Owen Su
1300 572 155

[For full version visit the website](https://www.plusagency.com.au)



The Fitzsimmons
BESPOKE RESIDENCES LANE COVE

DUPLEX

1A Fitzsimmons Avenue,
Lane Cove North NSW 2066

AREA

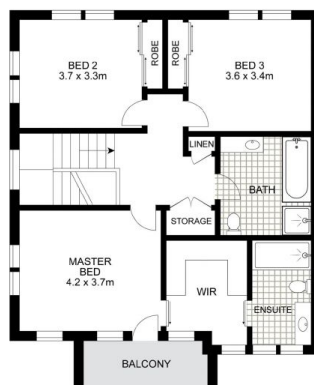
Land Size: 284 m²
Total Living Area: 224 m²



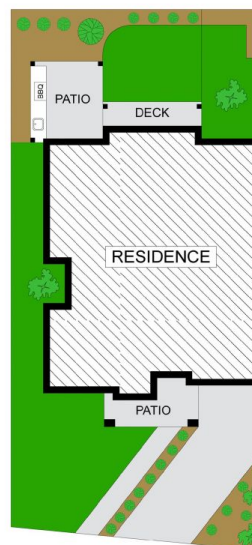
Disclaimer:
This plan is presented in good faith and is to be used as a guide. It does not constitute an offer or contract. All area sizes indicated are approximate only. Positions of furniture, fittings and the like are not indicative of final positioning.



GROUND LEVEL



LEVEL 1



SITE PLAN
(NOT TO SCALE)