



B511/53 Nancarrow Avenue Meadowbank NSW

1 1 1

This one-bedroom gem is not just any apartment; it's the largest and most exclusive one-bedroom unit in the entire building. With breathtaking waterfront views, it offers a living experience that's truly one-of-a-kind.

Key Features:

Unparalleled Space: Unlike any other in the building, this one-bedroom apartment boasts generous square footage, providing ample room for comfortable living and entertaining.

Large Bedroom: The spacious bedroom is a peaceful retreat with ample natural light, making it an ideal place to unwind after a long day.

Type : Apartment

View : <https://www.plusagency.com.au/sale/nsw/northern-suburbs/meadowbank/residential/apartment/7773407>

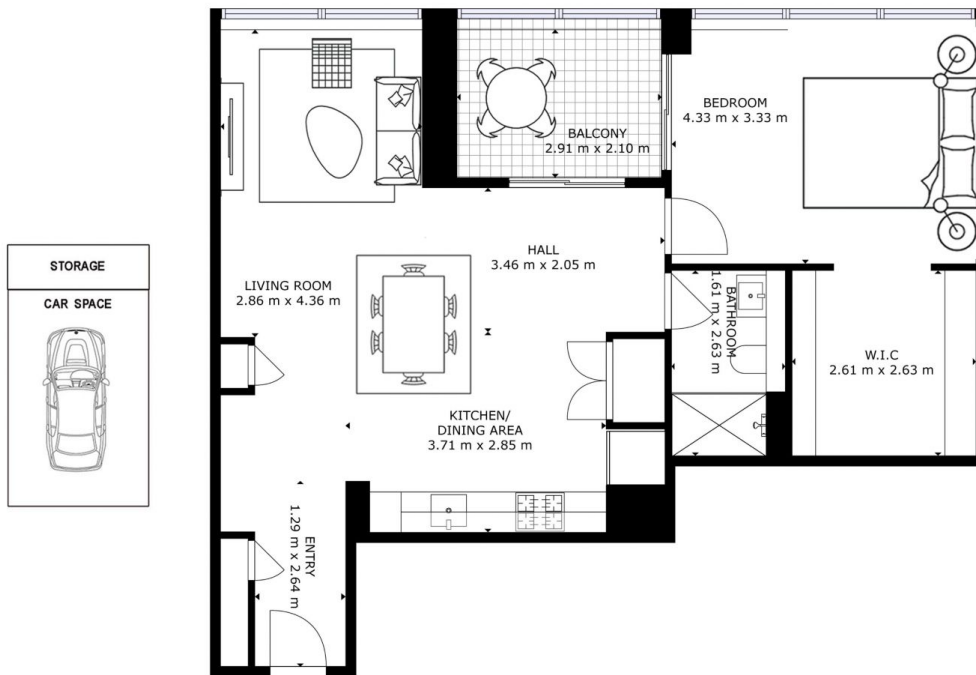


Roger/Li Zhu
0430 081 038



Hunter Liu
1300 572 155

[For full version visit the website](https://www.plusagency.com.au)



Disclaimer:
This plan is presented in good faith and is to be used as a guide. It does not constitute an offer or contract. All area sizes indicated are approximate only. Positions of furniture, fittings and the like are not indicative of final positioning.

Lancaster
MEADOWBANK

APARTMENT

B511/53 Nancarrow Ave,
Ryde NSW 2112

AREA

Total Area: Approx
74m² + Storage + Car Space



HOLDMARK

PLUS
AGENCY
EXCLUSIVE PROPERTY MANAGEMENT