



C902/12 Nancarrow Avenue Meadowbank NSW

2 2 1

PEARL OF THE BAY

This brilliantly master-planned community brings not only just a home but also a sophisticated lifestyle where amenities underneath the building and a lovely waterfront walk along the bayside. These new apartments are one of the best value waterfront apartments available in Sydney. Established on the Parramatta River, Shepherds Bays apartment offers not only the water views but also the foreshore gardens and other leisure options within the vicinity.

LOCATION

? Strategically convenient with just 20 minutes from Sydney CBD, 15 minutes to Paramatta CBD and moments' walk to Meadowbank train station, buses and ferry wharf.

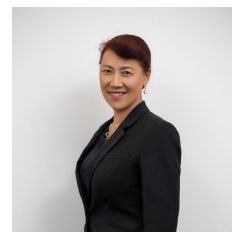
? Close proximity to Sydney Olympic Park, Rhodes Shopping Centre, Top Ryde shopping centre, Macquarie

Price : \$ 1,105,000

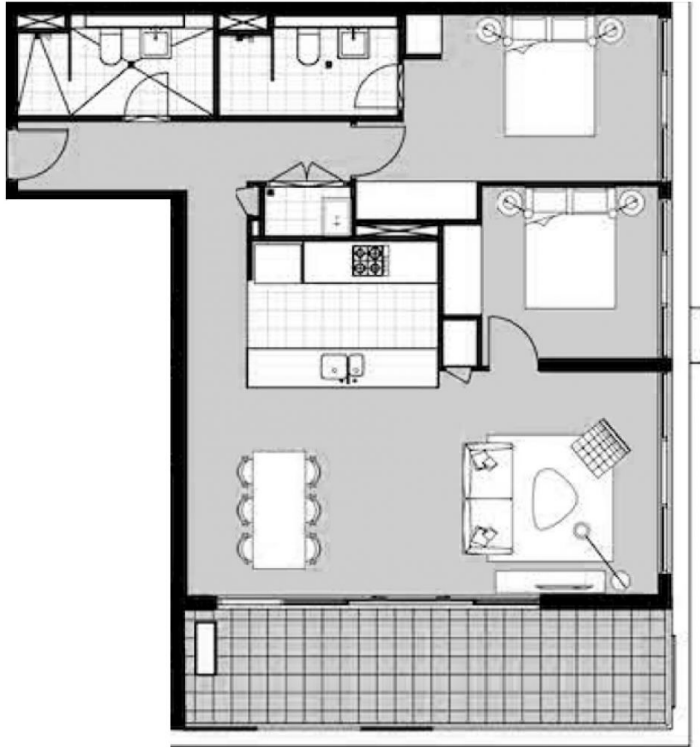
View : <https://www.plusagency.com.au/sale/nsw/northern-suburbs/meadowbank/residential/apartment/7745569>



Roger/Li Zhu
0430 081 038



Julie/Ling Wei
1300 572 155



PLUS
— REALTY AGENCY —

APARTMENT 2 BEDROOMS

902C / 12 Nancarrow Ave,
Meadowbank NSW 2114

AREA

Total : Approx **102 m²**



Disclaimer:
This plan is presented in good faith and is to be
used as a guide. It does not constitute an offer or
contract. All area sizes indicated are approximate
only. Positions of furniture, fittings and the like
are not indicative of final positioning.