



B1304/12 Nancarrow Avenue Meadowbank NSW

2 2 2

PEARL OF THE BAY

This brilliantly master-planned community brings not only a home but also a sophisticated lifestyle where amenities underneath the building and a lovely waterfront walk along the bayside. These new apartments are one of the best-value waterfront apartments available in Sydney. Established on the Parramatta River, Shepherds Bays apartment offers not only water views but also the foreshore gardens and other leisure options within the vicinity.

LOCATION

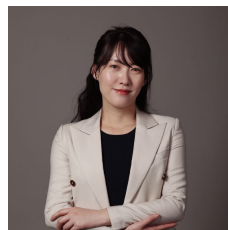
? Strategically convenient with just 20 minutes from Sydney CBD, 15 minutes to Paramatta CBD and moment walk to Meadowbank train station, buses and ferry wharf.

[For full version visit the website](https://www.plusagency.com.au/sale/nsw/northern-suburbs/meadowbank/residential/apartment/7684958)

Type : Apartment

Price : \$ 1,080,000

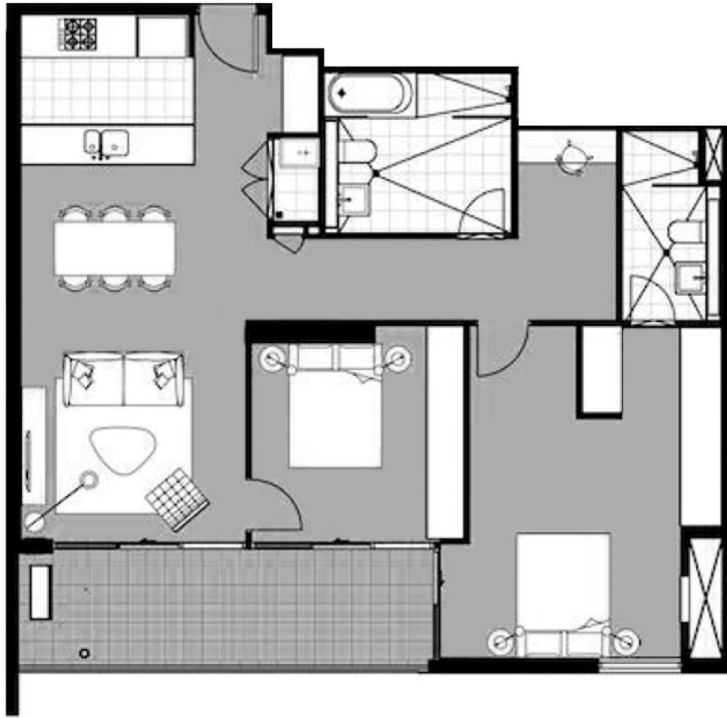
View : <https://www.plusagency.com.au/sale/nsw/northern-suburbs/meadowbank/residential/apartment/7684958>



Fiona Hu
1300 572 155



Roger/Li Zhu
0430 081 038



Disclaimer:
 This plan is presented in good faith and is to be used as a guide. It does not constitute an offer or contract. All area sizes indicated are approximate only. Positions of furniture, fittings and the like are not indicative of final positioning.



PEARL
 OF THE BAY

APARTMENT

1304B/12 Nancarrow Ave,
 Meadowbank NSW 2114

AREA

Total Area: Approx
 107 m²



HOLDMARK

PLUS
 AGENCY