

A202/53 Nancarrow Avenue Meadowbank NSW

2 2 1

This brilliantly master-planned shepherds bay community brings not only just a home but also a sophisticated lifestyle where amenities underneath the building and a lovely waterfront walk along the bayside. These new apartments in Stage 7 Lancaster building are one of the best value completed apartments available in Sydney. Established on the Parramatta River, Shepherds Bays apartment offers not only the water views but also the foreshore gardens and other leisure options within the vicinity.

View : <https://www.plusagency.com.au/sale/nsw/northern-suburbs/meadowbank/residential/apartment/7624463>

LOCATION

? Strategically convenient with just 20 minutes from Sydney CBD, 15 minutes to Paramatta CBD and moments' walk to Meadowbank train station, buses and ferry wharf.

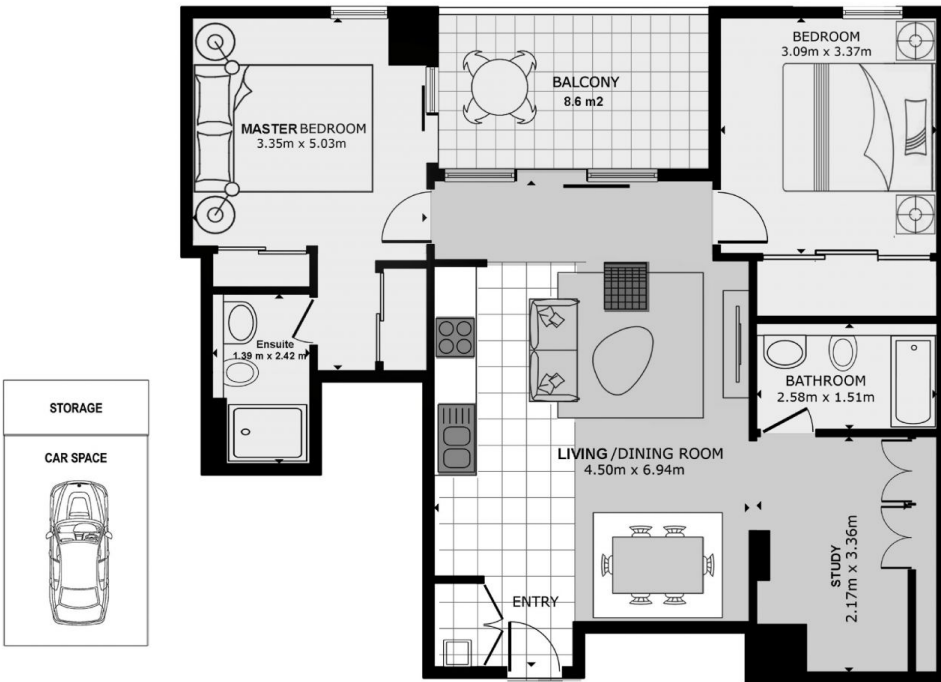
? Close proximity to Sydney Olympic Park, Rhodes Shopping Centre, Top Ryde shopping centre, Macquarie University and much more.



Jane Peng
1300 572 155



Roger/Li Zhu
0430 081 038



Disclaimer:
 This plan is presented in good faith and is to be used as a guide. It does not constitute an offer or contract. All area sizes indicated are approximate only. Positions of furniture, fittings and the like are not indicative of final positioning.

Lancaster
 MEADOWBANK

APARTMENT

A202/A302/A402/
 53 Nancarrow Ave,
 Ryde NSW 2112

AREA

Total Area: Approx
 84m² + Storage + Car Space



HOLDMARK

PLUS
 AGENCY