

### Unit 520/1015 Pacific Highway Roseville NSW

1 1 1

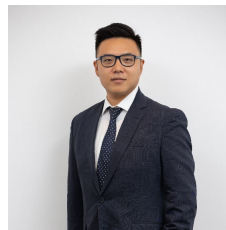
The brand new established one bed luxurious interior apartment in the convenience location. Effortless living in these extra-large apartments.

Wrapped in floor-to-ceiling glazing, living space offers a sumptuous entertaining setting, complimented by a premium stone kitchen and with covered balconies offering a versatile space to enjoy across all seasons. The secure island development also integrates eight gardens to enjoy with visitors, featuring two green rooftop terraces set with

- Car space and storage
- Bright winter garden and dining, high ceilings throughout
- Generous alfresco courtyard with neat garden, perfect for entertaining

**Type** : Apartment

**View** : <https://www.plusagency.com.au/sale/nsw/north-s-hore-upper/roseville/residential/apartment/7617875>

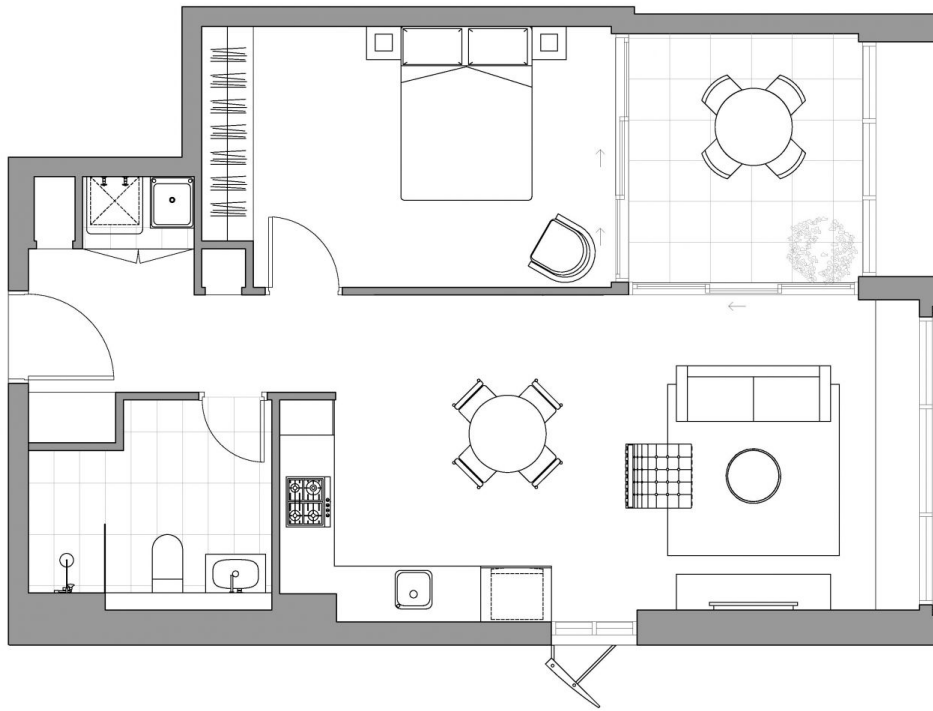


**Joe/Jiangzhou Sun**  
1300 572 155



**Reza Sedighinejad**  
1300 572 155

[For full version visit the website](https://www.plusagency.com.au)



Disclaimer: This layout plan was produced prior to construction and has been prepared for marketing purposes only. The information is believed to be correct but is not guaranteed. Changes may be made during construction and dimensions and areas are approximate only and together with the fittings and finishes are subject to change in accordance with the contract for sale. The position of the furniture and furnishings should not be taken to be indicative of final positions of power points, TV connection points and the like. Prospective purchasers must rely on their contract for sale for the list of inclusions. Bulkheads for services are not depicted. The purchaser must rely on the contract for sale.



**SEYMOURS**  
RESIDENCES

APARTMENT

Unit 520

AREA

Total Strata Size: 78 m<sup>2</sup>



1300 572 155

[sales@plusagency.com.au](mailto:sales@plusagency.com.au)



PLUS  
AGENCY