

## 604/1015 Pacific Highway Roseville NSW

2 2 1

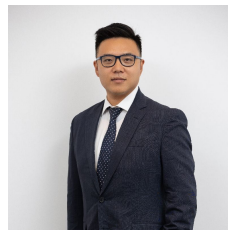
A stunning 2 bedroom, 2 bathroom apartment with breathtaking views of the Chatswood CBD, Rhodes and Macquarie Park. This luxurious and generously sized unit is perfect for those seeking a sophisticated and convenient lifestyle.

The oversized layout ensures a seamless flow throughout the living spaces, providing ample room for relaxation and entertainment. Natural light floods the interior, creating an inviting and bright ambiance that enhances the sense of space.

The living room is an elegant retreat, offering a serene atmosphere and captivating views that extend beyond the windows. From the comfort of your own home, enjoy the view to the vibrant Chatswood CBD, the bustling district of Rhodes, and the thriving Macquarie Park. Whether it's

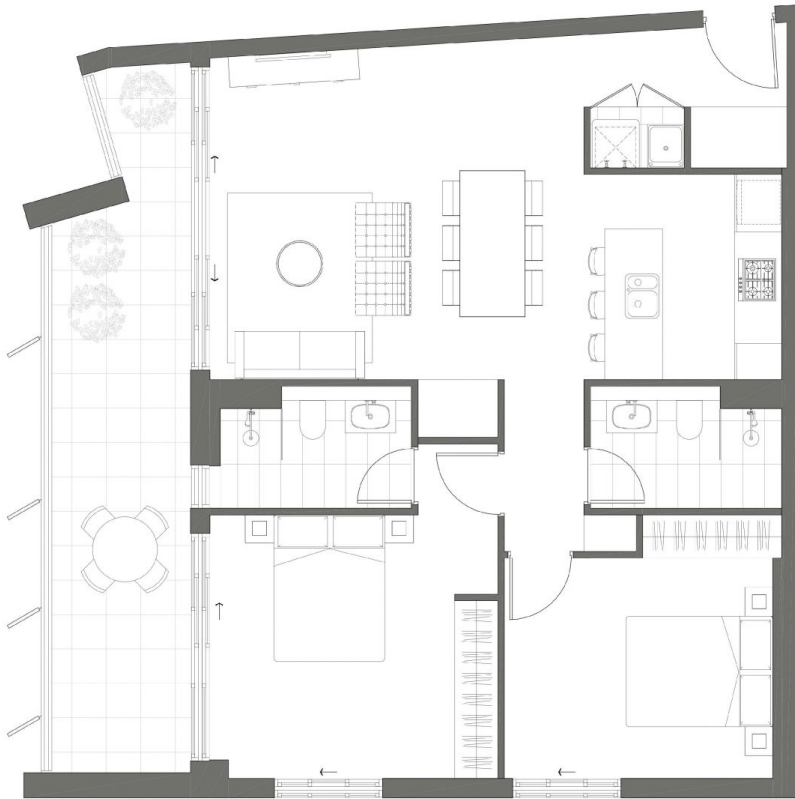
**Type** : Apartment

**View** : <https://www.plusagency.com.au/sale/nsw/north-sore-upper/roseville/residential/apartment/7571608>



**Joe/Jiangzhou Sun**  
1300 572 155

[For full version visit the website](https://www.plusagency.com.au)



Disclaimer: This report was prepared prior to construction and has been prepared for marketing purposes only. The information is intended to be correct but is not guaranteed. Changes may be made during construction and dimensions and areas are approximate only and together with the fittings and finishes are subject to change in accordance with the contract for sale. The position of the furniture and furnishings should not be taken to be indicative of final positions of power points, TV connection points and the like. Prospective purchasers must rely on their contract for sale for the list of inclusions. Bulkheads for services are not depicted. The purchaser must rely on the contract for sale.



**SEYMOURS**  
RESIDENCES

APARTMENT

Unit 604

AREA

Total Strata Size: 113 m<sup>2</sup>



**1300 572 155**  
sales@plusagency.com.au



**PLUS**  
AGENCY