



510/1015 Pacific Highway Roseville NSW

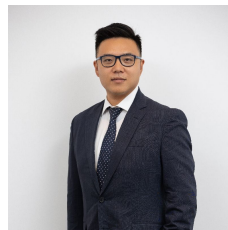
4 2 2

Unique 4 bedrooms brand new apartment is located in the luxurious brick building with winter garden

- 4 spacious bedrooms all with built-ins and master with walk-in robe
- a plenty of cabinet storage
- kitchen with huge size bench tops, Miele 5 burner gas cook top, Miele oven, steam oven, microwave, dishwasher and rangehood
- 2 modern bathrooms (including ensuite)
- Double side by side car space and storage cage, internal laundry, reverse cycle air conditioning and security video intercom
- Resort-like facilities including: 8 different design style common area and BBQ area with outdoor seating as well

Type : Apartment

View : <https://www.plusagency.com.au/sale/nsw/north-sore-upper/roseville/residential/apartment/7557270>

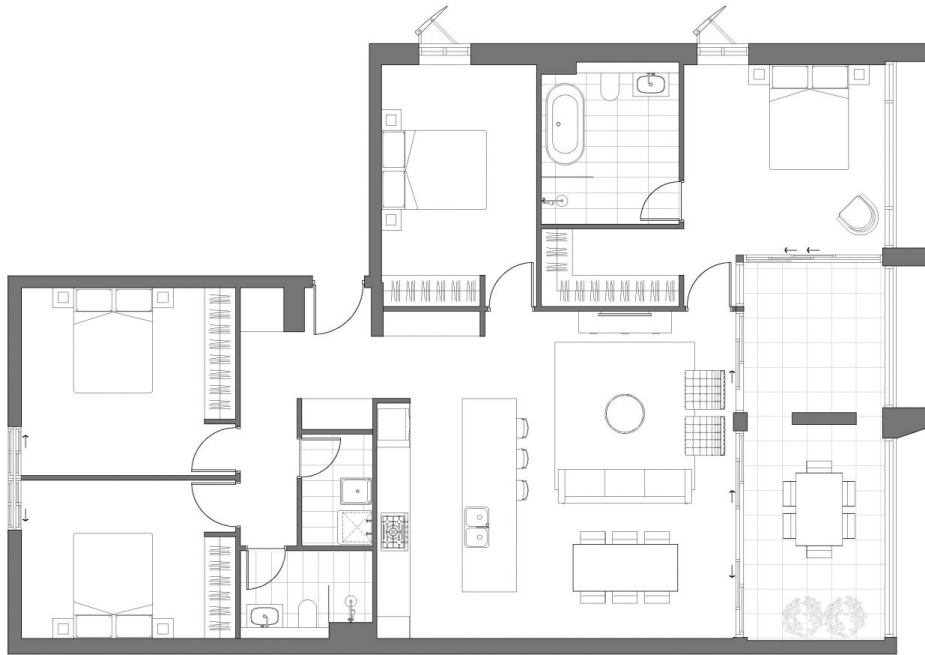


Joe/Jiangzhou Sun
1300 572 155



Jane Peng
1300 572 155

[For full version visit the website](https://www.plusagency.com.au)



Disclaimer: This layout plan was produced prior to construction and has been prepared for marketing purposes only. The information is believed to be correct but is not guaranteed. Changes may be made during construction and dimensions and areas are approximate only and together with the fittings and finishes are subject to change in accordance with the contract for sale. The position of the furniture and furnishings should not be taken to be indicative of final positions of power points, TV connection points and the like. Prospective purchasers must rely on their contract for sale for the list of inclusions. Bulkheads for services are not depicted. The purchaser must rely on the contract for sale.



SEYMOURS
RESIDENCES

APARTMENT

Unit 510

AREA

Total Strata Size: 185 m²



4



2



2



1300 572 155

sales@plusagency.com.au



KECO

PLUS
AGENCY