



607/30 Alfred Street Milsons Point NSW

2 2 1

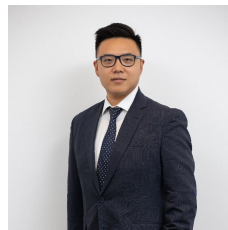
Introducing a new standard of luxury living for Milsons point, Aqualuna' architecturally striking low-rise boutique buildings are peacefully nestled amid waterside of Harbor bridge.

Kitchens incorporate granite island benchtops, a combination of timber and neutral coloured joinery, custom coloured tapware and quality Miele appliances. Bathrooms are beautifully finished with minimal aesthetic. In addition to the high quality custom coloured tapware, there is abundance of storage and ambient lighting.

Designed to make the most of every corner aspect, the sophisticated interiors of Aqualuna's residences evoke a timeless luxury, with details providing elegant comfort.

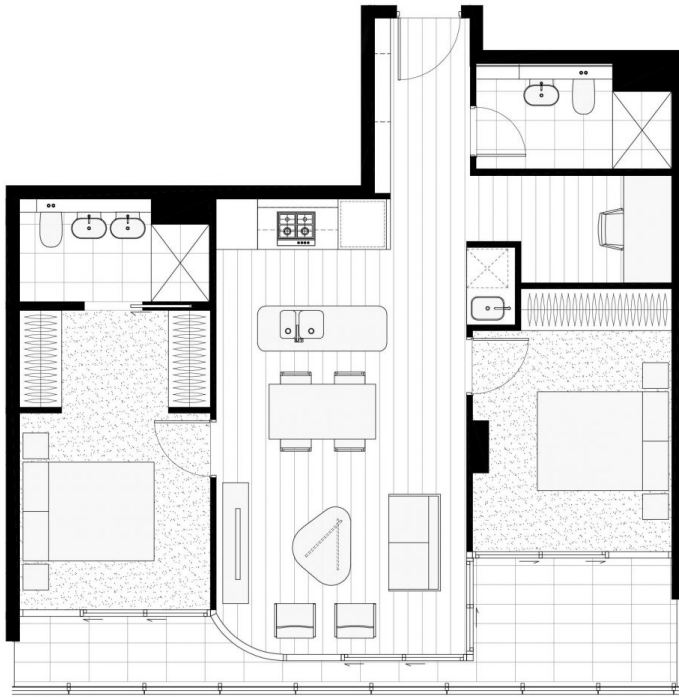
Type : Apartment

View : <https://www.plusagency.com.au/sale/nsw/north-s-hore-lower/milsons-point/residential/apartment/7538474>



Joe/Jiangzhou Sun
1300 572 155

[For full version visit the website](#)



PLUS
AGENCY

Total Strata Area:
Approx. 100m²

607/30 Alfred St
Milsons Point
NSW 2061



Disclaimer:
This plan is presented in good
faith and is to be used as a guide.
It does not constitute an offer or
contract. All area sizes indicated
are approximate only. Positions of
furniture, fittings and the like are
not indicative of final positioning.