



**B1104/12 Nancarrow Avenue Meadowbank NSW**

1 🛏 1 🚗 1 🚗

Exceptional waterfront living of Shepherds Bay masterplanned community brings new life and energy to the water's edge.

Celebrated waterside living, green space, stunning views, and leisure on your doorstep.

Established on the Parramatta River, Shepherds Bays apartment offers not only the water views but also the foreshore gardens and other leisure options within the vicinity in the true heart of Sydney

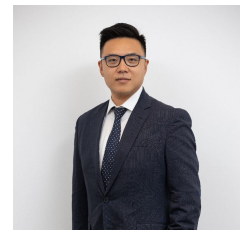
Disclaimer: This information has been obtained from our sources we deem to be reliable. We make no representation as to its accuracy. All images and photographs are indicative only. We are merely passing the information on. Any interested parties should make their

**Type** : Apartment

**View** : <https://www.plusagency.com.au/sale/nsw/northern-suburbs/meadowbank/residential/apartment/7538413>

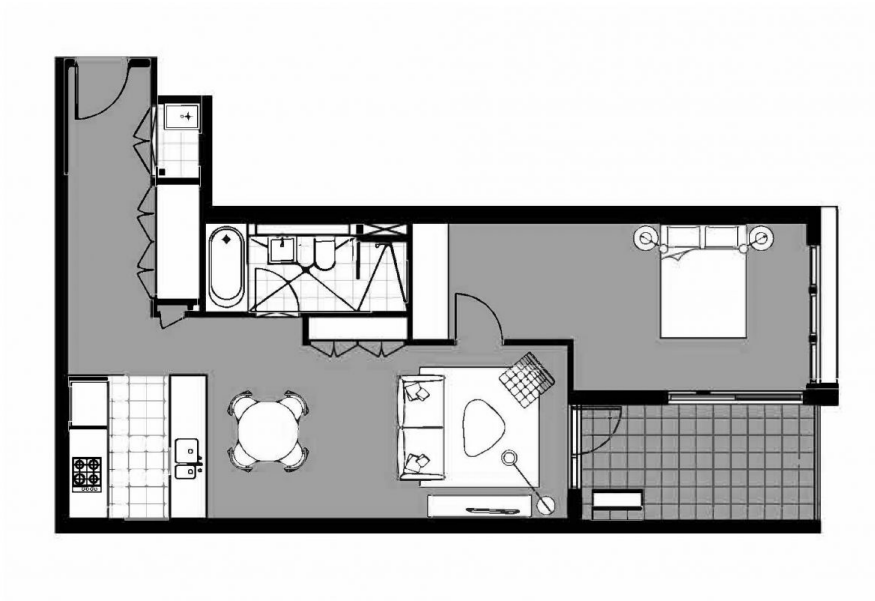


**Roger/Li Zhu**  
0430 081 038



**Joe/Jiangzhou Sun**  
1300 572 155

[For full version visit the website](https://www.plusagency.com.au)



Disclaimer:  
This plan is presented in good faith and is to be used as a guide. It does not constitute an offer or contract. All area sizes indicated are approximate only. Positions of furniture, fittings and the like are not indicative of final positioning.



PEARL  
OF THE BAY

### APARTMENT

1104B/12 Nancarrow Ave,  
Meadowbank NSW 2114

### AREA

Total Area: Approx  
74 m<sup>2</sup>



**HOLDMARK**

**PLUS**  
AGENCY