



B205/2-8 Pymble Avenue Pymble NSW

2 2 1

This brand new apartment located at famous project 'Cascade Gardens' which is peaceful and beautiful community. This project is perfect for those looking for classy, refined, tranquil and low maintenance property for own stay or investment.

The newly completed Cascade Gardens strategically situated with close proximity to many amenities

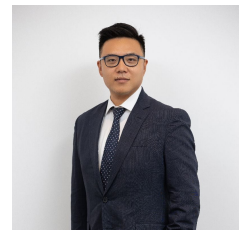
- Only half hour drive to Sydney CBD
- Just minutes' walk to Pymble Station and bus stops
- Distance to famous schools, including to Pymble Ladies college
- Minutes drive to Hornsby and Chatswood Shopping center

Type : Apartment

View : <https://www.plusagency.com.au/sale/nsw/north-s-hore-upper/pymble/residential/apartment/7538411>

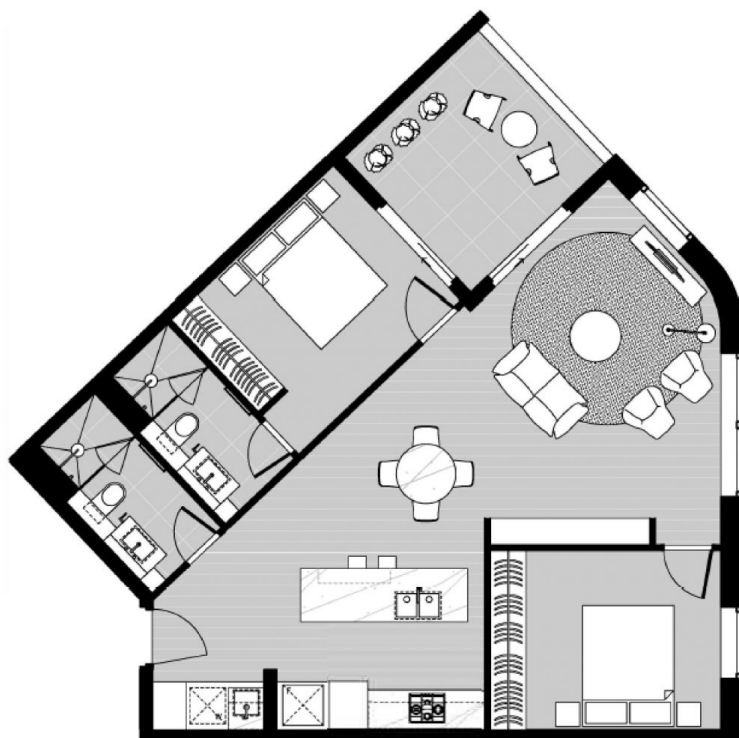


Owen Su
1300 572 155



Joe/Jiangzhou Sun
1300 572 155

[For full version visit the website](https://www.plusagency.com.au)



PLUS
— REALTY AGENCY —

APARTMENT 2 BEDROOMS

B205 / 8 Pymble Avenue,
Pymble NSW 2073

AREA

Total : Approx **92m²**



Disclaimer:
This plan is presented in good faith and is to be
used as a guide. It does not constitute an offer or
contract. All area sizes indicated are approximate
only. Positions of furniture, fittings and the like
are not indicative of final positioning.