



1/36 Brush Road Eastwood NSW

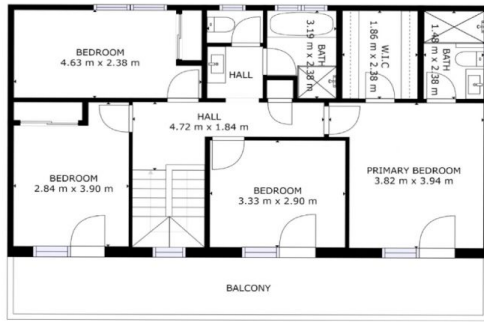
5 **2** **2**

This low maintenance garden duplex is perfect for median to large family. It has generous layout, living room and sunny backyard. Situated in Eastwood blue ribbon area with walking distance to shops, schools and transport.

Type : Semi Detached
Land Size : 457 sqm
View : <https://www.plusagency.com.au/sale/nsw/northern-suburbs/eastwood/residential/semi-detached/7538369>

- ? Generous open plan lounge and dining access to outdoor area;
- ? Perfect floor plan with no space waste;
- ? Spacious master bedroom with Ensuite, walk-in wardrobe and private balcony;
- ? Floor throughout both levels;
- ? Ducted Air Con thought out;
- ? Walking distance to one of the best public school: Eastwood Public School, and also to the shopping centre and train station;

[For full version visit the website](https://www.plusagency.com.au)



FLOOR 2



FLOOR 1

PLUS
— REALTY AGENCY —

**APARTMENT
5 BEDROOMS**

1/36 Brush Rd
Eastwood NSW 2122

Total: Approx **218 m²**



Disclaimer:
This plan is presented in good faith and is to be used as a guide. It does not constitute an offer or contract. All area sizes indicated are approximate only. Positions of furniture, fittings and the like are not indicative of final positioning.