



B1003/12 Nancarrow Avenue Meadowbank NSW

1 1 1

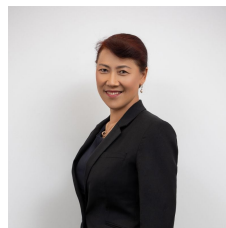
This brilliantly master-planned community brings not only just a home but also a sophisticated lifestyle where amenities underneath the building and a lovely waterfront walk along the bayside. These new apartments are one of the best value waterfront apartments available in Sydney. Established on the Parramatta River, Shepherds Bays apartment offers not only the water views but also the foreshore gardens and other leisure options within the vicinity.

LOCATION

? Strategically convenient with just 20 minutes from Sydney CBD, 15 minutes to Paramatta CBD and moments' walk to Meadowbank train station, buses and ferry wharf.

? Close proximity to Sydney Olympic Park, Rhodes

Type : Apartment
Land Size : 54 sqm
View : <https://www.plusagency.com.au/sale/nsw/northern-suburbs/meadowbank/residential/apartment/7538361>

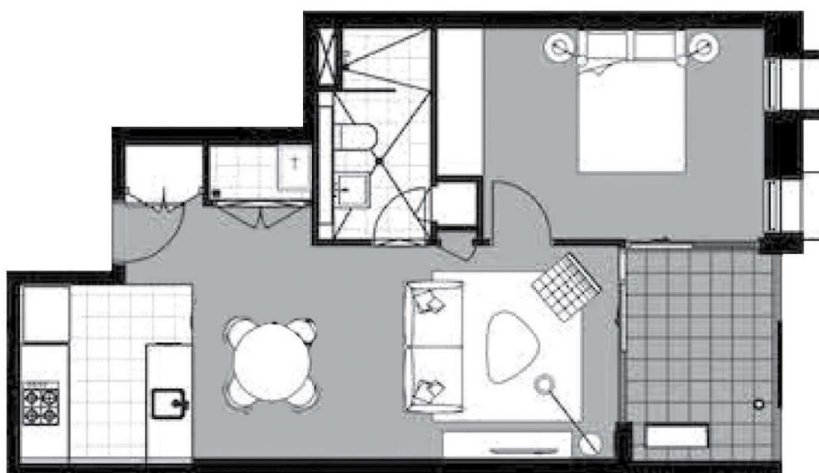


Julie/Ling Wei
1300 572 155



Roger/Li Zhu
0430 081 038

[For full version visit the website](https://www.plusagency.com.au)



PLUS
— AGENCY —

APARTMENT

1003B/12 Nancarrow Ave,
Meadowbank NSW 2114

AREA

Total Area:
Approx 54 m²



Disclaimer:
This plan is presented in good faith and is to be
used as a guide. It does not constitute an offer
or contract. All area sizes indicated are approx-
imate only. Positions of furniture, fittings and
the like are not indicative of final positioning.