



A702/2 Oliver Road Chatswood NSW

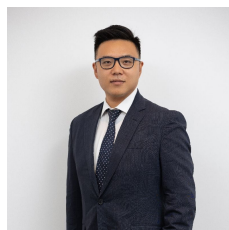
2 2 1

This brand new 2 beds apartment is a prime example of its excellence, enjoying a coveted corner position in the block and exceptional sweeping views that take in National Park & Sydney CBD. It's the perfect choice for those seeking executive living without compromise in a convenient and indulgent setting. Clever design sees every room enjoying the views with no space to waste, secure basement parking and storage. Peaceful and private, minutes walks to Chatswood's heart, stations.

- * Spacious open plan living and dining, ducted a/c
- * On higher level 7
- * Luxury stone wrapped, gas kitchen, Miele appliances
- * Spacious two beds with views and BIR's, master with ensuite

Type : Apartment

View : <https://www.plusagency.com.au/sale/nsw/north-s-hore-lower/chatswood/residential/apartment/7538317>

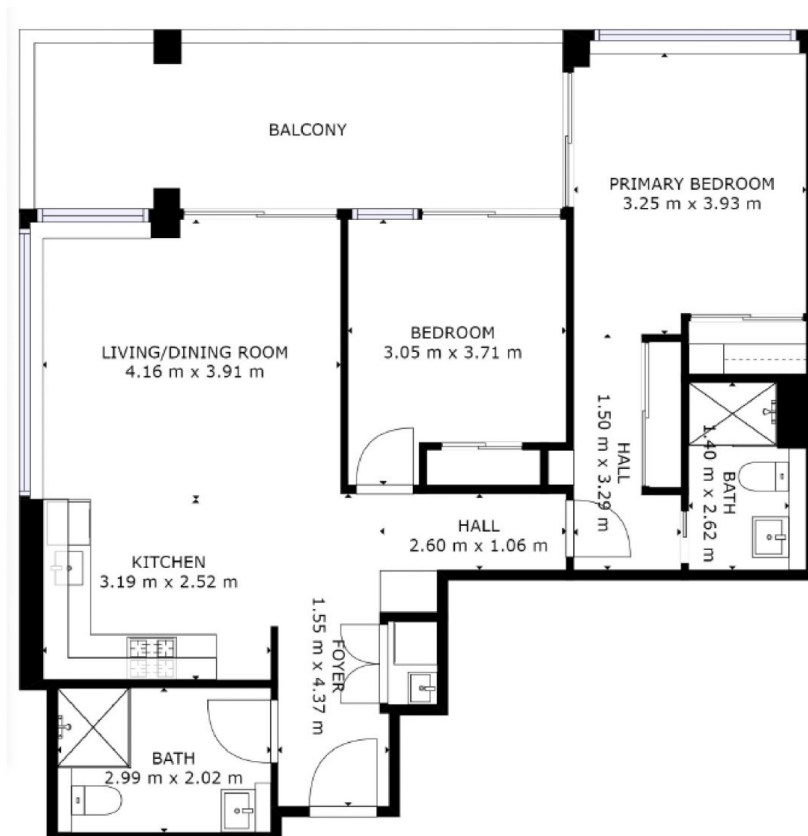


Joe/Jiangzhou Sun
1300 572 155



Owen Su
1300 572 155

[For full version visit the website](https://www.plusagency.com.au)



PLUS
AGENCY

APARTMENT

A702/2 Oliver Rd,
Chatswood NSW 2067

AREA

Total Area:
Approx 96 m²



Disclaimer:
This plan is presented in good faith and is to be
used as a guide. It does not constitute an offer
or contract. All area sizes indicated are approx-
imate only. Positions of furniture, fittings and
the like are not indicative of final positioning.