



C104/8 Pymble Avenue Pymble NSW

2 2 1

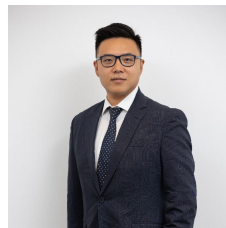
This brand new 'Cascade Gardens' luxury collection is located amongst Pymble's abundant parkland and leafy surrounds. This project is perfect for those looking for classy, refined, tranquil and low maintenance property for own stay or investment.

The newly completed Cascade Gardens strategically situated with close proximity to many amenities as below:

- 2 minutes' walk to Pymble Station
- 150 m to Pymble Ladies College
- 15 minutes drive to Chatswood CBD
- 3 minutes drive to Avondale Golf Course
- 6 minutes drive to Lane Cove National Park
- 30 minutes to Sydney CBD

Type : Apartment

View : <https://www.plusagency.com.au/sale/nsw/north-sore-upper/pymble/residential/apartment/7538312>

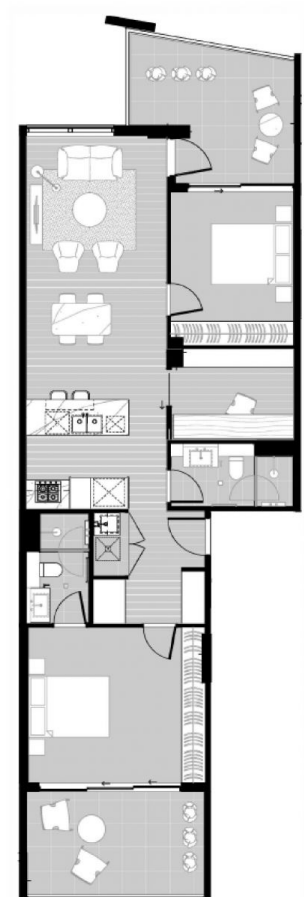


Joe/Jiangzhou Sun
1300 572 155



Stephenie Wong
1300 572 155

[For full version visit the website](https://www.plusagency.com.au)



PLUS
— REALTY AGENCY —

APARTMENT 2 BEDROOMS

C104 / 8 Pymble Avenue,
Pymble NSW 2073

AREA

Total : Approx **113 m²**



Disclaimer:
This plan is presented in good faith and is to be
used as a guide. It does not constitute an offer or
contract. All area sizes indicated are approximate
only. Positions of furniture, fittings and the like
are not indicative of final positioning.