



A1007/12 Nancarrow Avenue Meadowbank NSW

3 2 2

Exceptional waterfront living of Shepherds Bay masterplanned community brings new life and energy to the water's edge.

Celebrated waterside living, green space, stunning views, and leisure on your doorstep.

Established on the Parramatta River, Shepherds Bays apartment offers not only the water views but also the foreshore gardens and other leisure options within the vicinity in the true heart of Sydney.

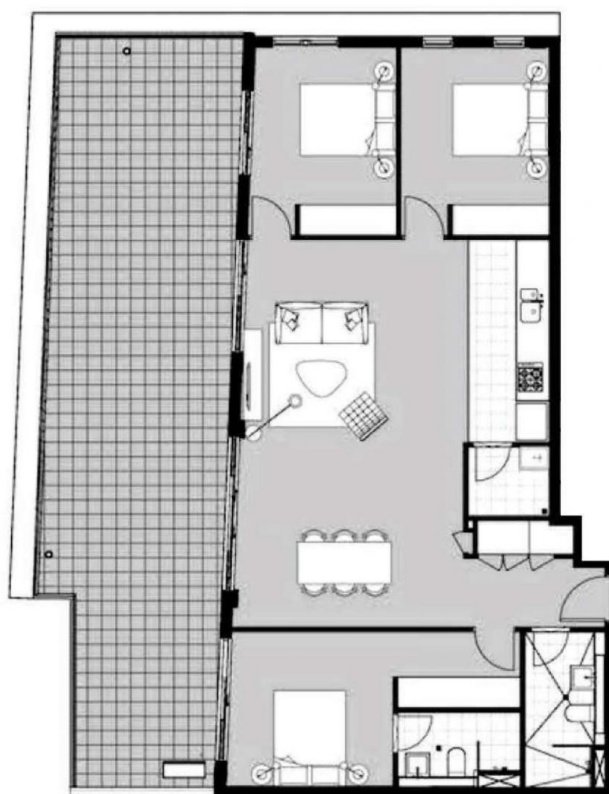
(Parking provided, please contact us to make prior arrangement)

Type : Apartment
Land Size : 165 sqm
View : <https://www.plusagency.com.au/sale/nsw/northern-suburbs/meadowbank/residential/apartment/7538309>



Roger/Li Zhu
0430 081 038

[For full version visit the website](https://www.plusagency.com.au)



PLUS
— AGENCY —

APARTMENT

1007A/12 Nancarrow Ave,
Meadowbank NSW 2114

AREA

Total Area:
Approx 100 m²



Disclaimer:
This plan is presented in good faith and is to be
used as a guide. It does not constitute an offer
or contract. All area sizes indicated are approx-
imate only. Positions of furniture, fittings and
the like are not indicative of final positioning.