



### B904/12 Nancarrow Avenue Meadowbank NSW

1 1 1

This brilliantly master-planned community brings not only just a home but also a sophisticated lifestyle where amenities underneath the building and a lovely waterfront walk along the bayside. These new apartments are one of the best value waterfront apartments available in Sydney. Established on the Parramatta River, Shepherds Bays apartment offers not only the water views but also the foreshore gardens and other leisure options within the vicinity.

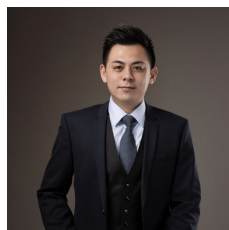
#### LOCATION

? Strategically convenient with just 20 minutes from Sydney CBD, 15 minutes to Paramatta CBD and moments' walk to Meadowbank train station, buses and ferry wharf.

? Close proximity to Sydney Olympic Park, Rhodes

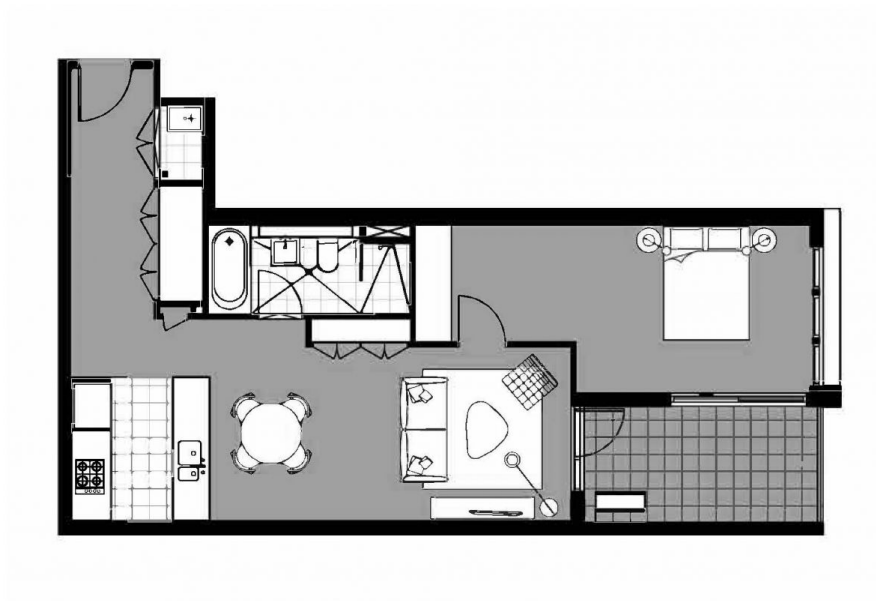
**Type** : Apartment

**View** : <https://www.plusagency.com.au/sale/nsw/northern-suburbs/meadowbank/residential/apartment/7538308>




**Roger/Li Zhu**  
0430 081 038

[For full version visit the website](https://www.plusagency.com.au)



Disclaimer:  
This plan is presented in good faith and is to be used as a guide. It does not constitute an offer or contract. All area sizes indicated are approximate only. Positions of furniture, fittings and the like are not indicative of final positioning.




PEARL  
OF THE BAY


APARTMENT


904B/12 Nancarrow Ave,  
Meadowbank NSW 2114

AREA


Total Area: Approx  
74 m<sup>2</sup>

  
1

  
1

  
1

N  

PLUS  
AGENCY  
EXCLUSIVE ESTATE MANAGEMENT & SALES