



**B806/12 Nancarrow Avenue Meadowbank NSW**

2 🛏 2 🚿 1 🚗

This brilliantly master-planned community brings not only just a home but also a sophisticated lifestyle where amenities underneath the building and a lovely waterfront walk along the bayside. These new apartments are one of the best value waterfront apartments available in Sydney. Established on the Parramatta River, Shepherds Bays apartment offers not only the water views but also the foreshore gardens and other leisure options within the vicinity.

**LOCATION**

? Strategically convenient with just 20 minutes from Sydney CBD, 15 minutes to Paramatta CBD and moments' walk to Meadowbank train station, buses and ferry wharf.  
? Close proximity to Sydney Olympic Park, Rhodes

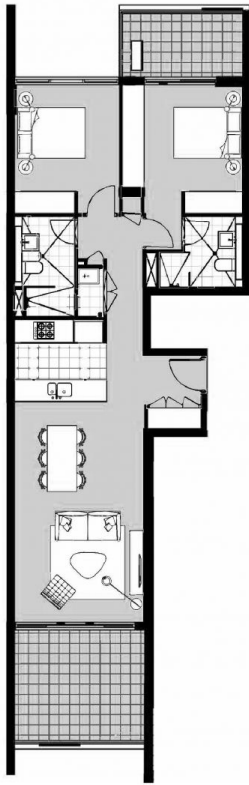
**Type** : Apartment

**View** : <https://www.plusagency.com.au/sale/nsw/northern-suburbs/meadowbank/residential/apartment/7538307>



**Roger/Li Zhu**  
**0430 081 038**

[For full version visit the website](https://www.plusagency.com.au)



Disclaimer:  
This plan is presented in good faith and is to be used as a guide. It does not constitute an offer or contract. All area sizes indicated are approximate only. Positions of furniture, fittings and the like are not indicative of final positioning.

PEARL  
OF THE BAY

APARTMENT

806B/12 Nancarrow Ave,  
Meadowbank NSW 2114

AREA

Total Area: Approx  
103 m<sup>2</sup>

2 2 1

N

HOLDMARK

PLUS  
AGENCY

PEARL OF THE BAY APARTMENTS

The advertisement graphic features a dark background with a repeating geometric pattern. At the top is the 'PEARL OF THE BAY' logo, consisting of a circular emblem with horizontal lines. Below the logo, the word 'PEARL' is written in large, spaced-out letters, with 'OF THE BAY' in smaller letters underneath. The word 'APARTMENT' is centered in a bold, sans-serif font. The address '806B/12 Nancarrow Ave, Meadowbank NSW 2114' is listed below. The word 'AREA' is centered in a bold, sans-serif font. Below 'AREA', the text 'Total Area: Approx' is followed by '103 m²'. Underneath, three icons represent 2 bedrooms, 2 bathrooms, and 1 car space, each with a corresponding number below it. A north arrow is positioned below the icons. The 'HOLDMARK' logo is centered below the north arrow. At the bottom, the 'PLUS AGENCY' logo is displayed, with 'PLUS' in large letters and 'AGENCY' in smaller letters below it. The text 'PEARL OF THE BAY APARTMENTS' is written in small letters at the very bottom.