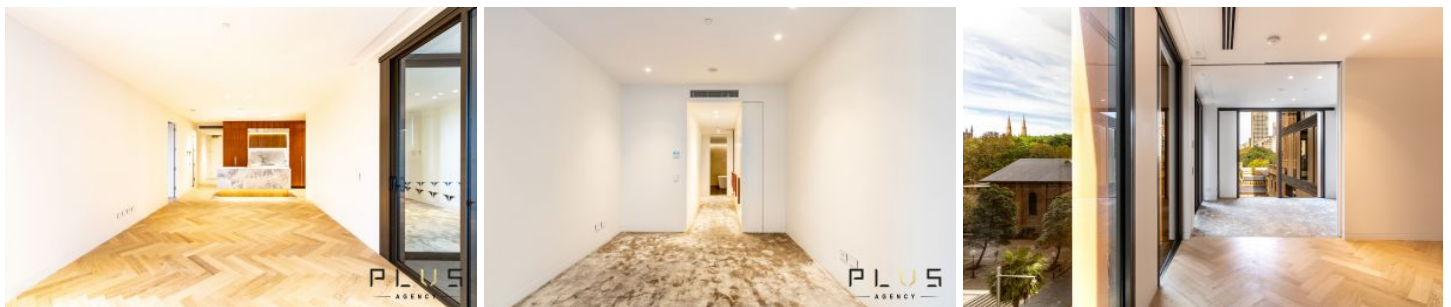


## LOCK DOWN LIMITED OFFER

Only 5% Required to  
Complete Settlement



### 160 King Street Sydney NSW

3 2 1

Not only 5% deposit, but 5% deposit is all you need to prepare to settlement this property, first time in Sydney, only 1 remaining opportunity. Make sure to call today!

Architecturally designed by one of the best architects of the world - FJMT. King&Phillip honours the tradition of its timeless architectural surroundings through a distinctive design that inspired by the golden ratio and enhanced through progressive architectural details.

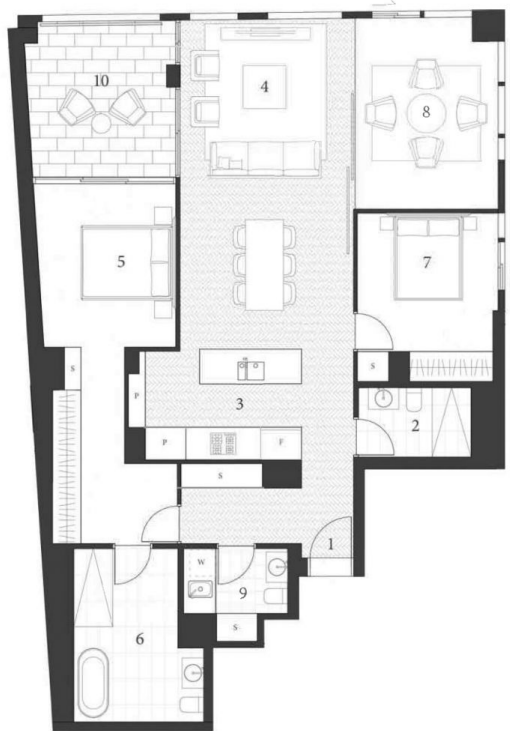
Those who call King&Phillip their home will be with countless historical monuments on your doorstep, you will be living the next charter.

? Elegance and sophisticated masterpiece located in the

[For full version visit the website](https://www.plusagency.com.au/sale/nsw/sydney-city/sydney/residential/apartment/7538303)

**Type** : Apartment

**View** : <https://www.plusagency.com.au/sale/nsw/sydney-city/sydney/residential/apartment/7538303>



**PLUS**  
— AGENCY —

Internal: Approx. 121m<sup>2</sup>  
External: Approx. 12m<sup>2</sup>  
Total: Approx. 133m<sup>2</sup>

148-160 King Street,  
Sydney NSW 2000



**Disclaimer:**  
This plan is presented in good faith and is to be used as a guide. It does not constitute an offer or contract. All area sizes indicated are approximate only. Positions of furniture, fittings and the like are not indicative of final positioning.