



707/116 Bowden Street Meadowbank NSW

1 1 1

"Kingston Quarter" Shepherds Bay is the area's finest development offering a waterfront position, luxurious designer finishes and the most convenient access to Meadowbank's surrounds. Resort style grounds create a luxurious waterside playground with Train station, Ferry wharf and local buses all within a short walk.

- Generous bedroom with built-ins
- Balcony ideal for entertaining
- Great open plan layout
- Reverse cycle air-conditioning
- Secure car space
- Swimming pool and spa

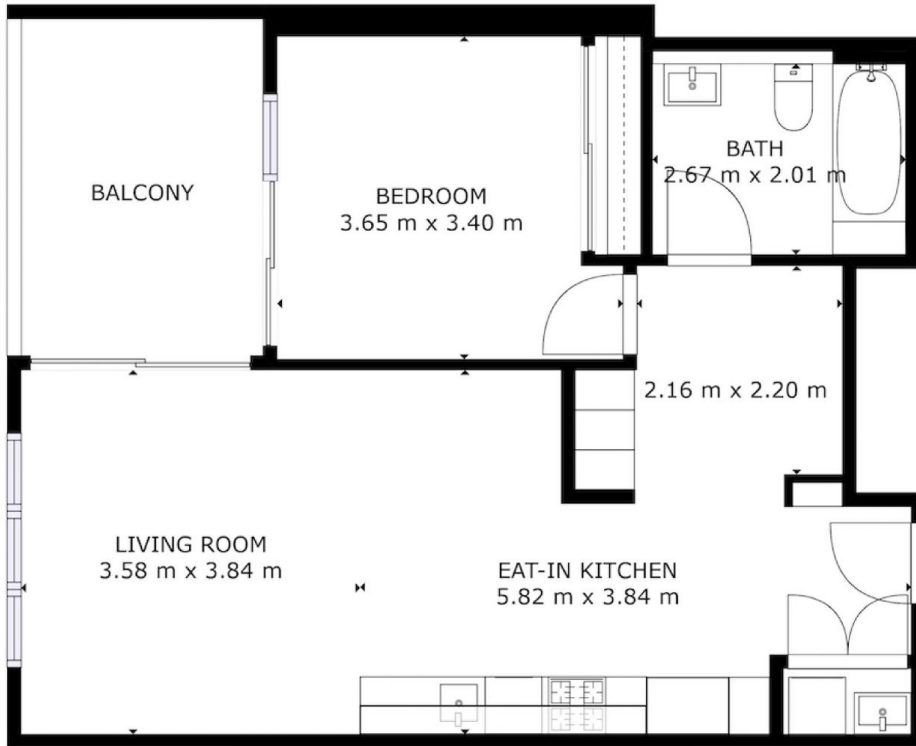
Type : Apartment

View : <https://www.plusagency.com.au/sale/nsw/northern-suburbs/meadowbank/residential/apartment/7538302>



Roger/Li Zhu
0430 081 038

[For full version visit the website](https://www.plusagency.com.au)



PLUS
AGENCY

APARTMENT

7.07/116 Bowden Street,
Meadowbank NSW 2114

AREA

Total : Approx. 77 m²



Disclaimer:
This plan is presented in good faith and is to be
used as a guide. It does not constitute an offer or
contract. All area sizes indicated are approximate
only. Positions of furniture, fittings and the like are
not indicative of final positioning.