



**B601/8 Pymble Avenue Pymble NSW**

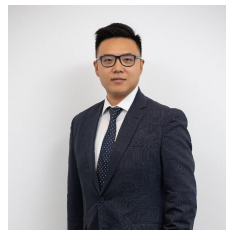
2 2 1

This brand new 'Cascade Gardens' luxury collection is located amongst Pymble's abundant parkland and leafy surrounds. This project is perfect for those looking for classy, refined, tranquil and low maintenance property for own stay or investment.

**Type** : Apartment  
**View** : <https://www.plusagency.com.au/sale/nsw/north-s-hore-upper/pymble/residential/apartment/7538281>

The newly completed Cascade Gardens strategically situated with close proximity to many amenities as below:

- 2 minutes walk to Pymble Station
- 150 m to Pymble Ladies College
- 15 minutes drive to Chatswood CBD
- 3 minutes drive to Avondale Golf Course
- 6 minutes drive to Lane Cove National Park
- 30 minutes to Sydney CBD

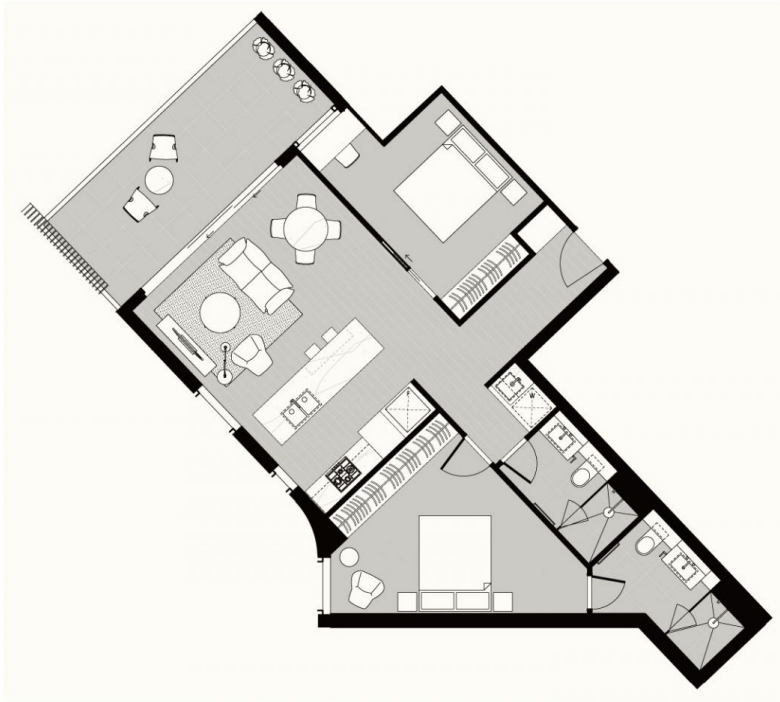


**Joe/Jiangzhou Sun**  
1300 572 155



**Stephenie Wong**  
1300 572 155

[For full version visit the website](https://www.plusagency.com.au)



PLUS  
AGENCY

Total: Approx. 90m<sup>2</sup>

B601/8 Pymble  
Avenue, Pymble  
NSW 2073



Disclaimer:  
This plan is presented in good  
faith and is to be used as a guide.  
It does not constitute an offer or  
contract. All area sizes indicated  
are approximate only. Positions of  
furniture, fittings and the like are  
not indicative of final positioning.