



807/30 Alfred Street Milsons Point NSW

2 2 1

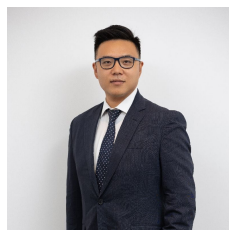
Introducing a new standard of luxury living for Milsons point, Aqualuna' architecturally striking low-rise boutique buildings are peacefully nestled amid waterside of Harbor bridge.

Kitchens incorporate granite island benchtops, a combination of timber and neutral coloured joinery, custom coloured tapware and quality Miele appliances. Bathrooms are beautifully finished with minimal aesthetic. In addition to the high quality custom coloured tapware, there is abundance of storage and ambient lighting.

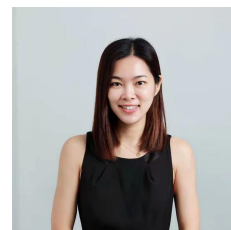
Designed to make the most of every corner aspect, the sophisticated interiors of Aqualuna's residences evoke a timeless luxury, with details providing elegant comfort.

Type : Apartment

View : <https://www.plusagency.com.au/sale/nsw/north-s-hore-lower/milsons-point/residential/apartment/7538270>

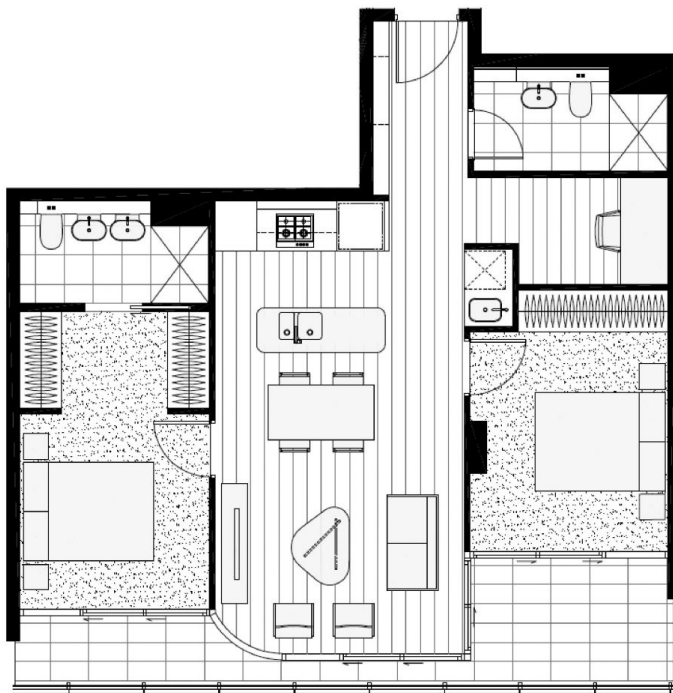


Joe/Jiangzhou Sun
1300 572 155



Stephenie Wong
1300 572 155

[For full version visit the website](https://www.plusagency.com.au)



PLUS
AGENCY

APARTMENT

807/30 Alfred Street
Milsons Point NSW 2061

AREA

Total : Approx. 100 m²

2+S

2

1



Disclaimer:
This plan is presented in good faith and is to be used as a guide. It does not constitute an offer or contract. All areas stated are approximate only. Positions of furniture, fittings and the like are not indicative of final positioning.