

503/2 Canberra Avenue St Leonards NSW

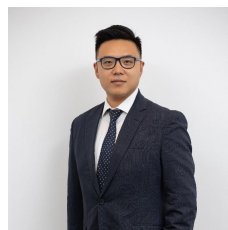
3 2 1

Located in next super suburb, St Leonards, this light filled West facing 2 storey 3 Bed penthouse is in a quiet corner of the complex overlooking landscaped gardens and Newland Park.

- ? Rare low-rise, low density building in lower North Shore, only 30 apartments;
- ? 3 Bedrooms ,2.5 Bathroom, 1 car space and storage;
- ? High 2.8 M Ceiling Height;
- ? Timber floor is throught out kitchen and living room;
- ? Ducted reverse cycle air-conditioning and ducted rangehood;
- ? 4 Mins walk to St. Leonards Train station and North Shore hospital;
- ? Gas stainless steel cooking, Miele appliances, double door refrigerator included;

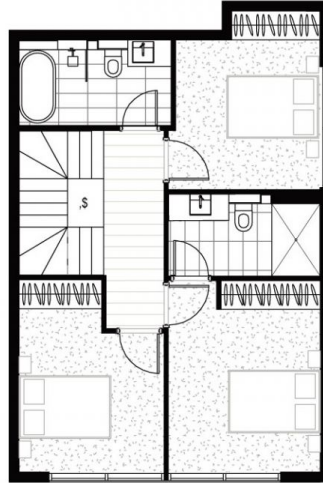
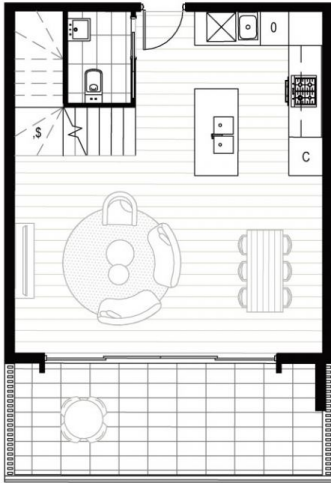
Type : Apartment

View : <https://www.plusagency.com.au/sale/nsw/north-shore-lower/st-leonards/residential/apartment/7538264>



Joe/Jiangzhou Sun
1300 572 155

[For full version visit the website](https://www.plusagency.com.au)



PLUS
— AGENCY —

Internal: Approx. 103m²
External: Approx. 15m²
Total: Approx. 118m²

503/2 Canberra
Avenue, Street
Leonards NSW
2065



Disclaimer:
This plan is presented in good
faith and is to be used as a guide.
It does not constitute an offer or
contract. All area sizes indicated
are approximate only. Positions of
furniture, fittings and the like are
not indicative of final positioning.