



#### 404/116 Bowden Street Meadowbank NSW

2 2 1

"Kingston Quarter" Shepherds Bay is the area's finest development offering a waterfront position, luxurious designer finishes and the most convenient access to Meadowbank's surrounds. Resort style grounds create a luxurious waterside playground with Train station, Ferry wharf and local buses all within a short walk.

- Generous bedroom with built-ins
- Balcony ideal for entertaining
- Great open plan layout
- Reverse cycle air-conditioning
- Secure car space
- Swimming pool and spa

Disclaimer: This information has been obtained from our sources we deem to be reliable. We make no representation as to its accuracy. All images and photographs are indicative only. We are merely passing the information on. Any interested parties should make their own inquiries.

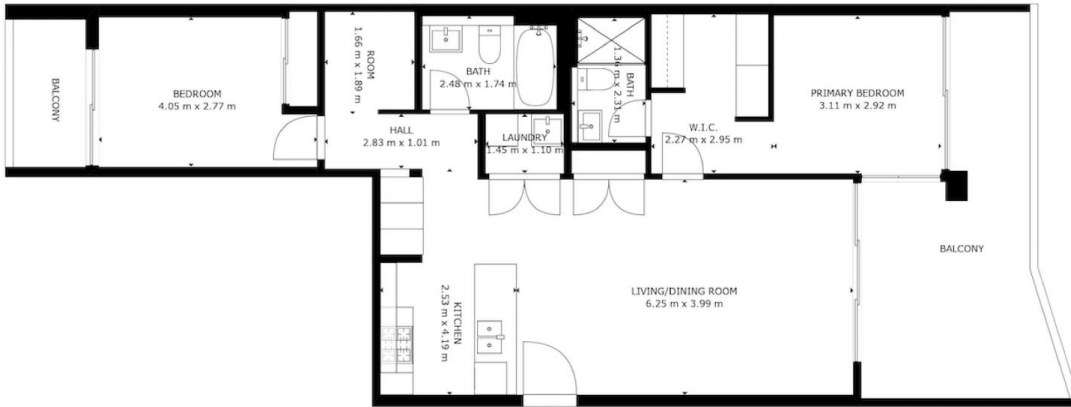
[For full version visit the website](https://www.plusagency.com.au)

**Type** : Apartment

**View** : <https://www.plusagency.com.au/sale/nsw/northern-suburbs/meadowbank/residential/apartment/7538226>



**Roger/Li Zhu**  
**0430 081 038**



PLUS  
AGENCY

## APARTMENT

4.04/116 Bowden Street,  
Meadowbank NSW 2114

## AREA

Total: Approx. 123 m<sup>2</sup>

2+Study 2 1



Disclaimer:  
This plan is presented in good faith and is to be used as a guide. It does not constitute an offer or contract. All area sizes indicated are approximate only. Positions of furniture, fittings and the like are not indicative of final positioning.