

317/1015 Pacific Highway Roseville NSW

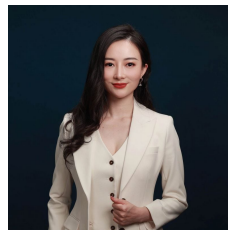
2 🚗 2 📄 1 🚗

Each apartment comes with car space and storage, additional storage can be allocated while stocks last

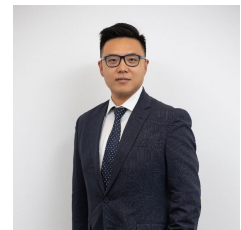
Reshaping the streetscape at a landmark address on the boundary of Roseville and Chatswood, the highly anticipated Seymours Residences is nearing its mid-2022 completion date. Envisioned by BVN, the construction of this forward-thinking apartment collection is in the hands of Ceerose, known as a leading prestige building group with a reputation for delivering innovative property developments.

Seymours Residences spans across three buildings appearing as one striking low-rise complex, with a bold façade of smoked raw brick, concrete and glass already turning heads during the city commute. The secure island

Type : Apartment
View : <https://www.plusagency.com.au/sale/nsw/north-s-hore-upper/roseville/residential/apartment/7526141>



Fiona/Shuran Yang
0452 480 606



Joe/Jiangzhou Sun
1300 572 155

[For full version visit the website](https://www.plusagency.com.au)



Disclaimer: This layout plan was produced prior to construction and has been prepared for marketing purposes only. The information is believed to be correct but is not guaranteed. Changes may be made during construction and dimensions and areas are approximate only and together with the fittings and finishes are subject to change in accordance with the contract for sale. The position of the furniture and furnishings should not be taken to be indicative of final positions of power points, TV connection points and the like. Prospective purchasers must rely on their contract for sale for the list of inclusions. Bathrooms for services are not depicted. The purchaser must rely on the contract for sale.



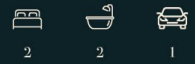
SEYMOURS
RESIDENCES

APARTMENT

Unit 317

AREA

Total Strata Size: 119 m²



1300 572 155

sales@plusagency.com.au



PLUS
AGENCY