

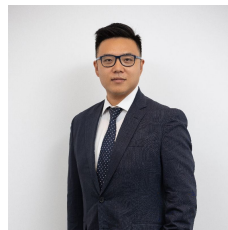


602/1015 Pacific Highway Roseville NSW

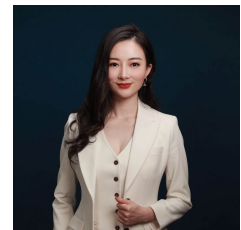
3 🛏 2 🚿 2 🚗

- Extra large 3 bedroom apartment with East facing aspect and district views
- Open plan lounge and dining with hardwood floors, shadow line ceilings
- Gas kitchen with 40mm stone bench tops, Miele appliances, feature cabinetry and breakfast bar
- Huge wrap-around balcony perfect for entertaining which offers podium tiling, lighting, tap, and gas point
- Built in wardrobes in all bedrooms
- Fully tiled bathrooms with recessed stone bench tops and feature tiles.
- Ducted reverse cycle air conditioning zoned for bedrooms and living areas
- Beautifully displayed common areas include garden terraces with outdoor furniture, water features, children's

Type : Apartment
View : <https://www.plusagency.com.au/sale/nsw/north-s-hore-upper/roseville/residential/apartment/7522531>

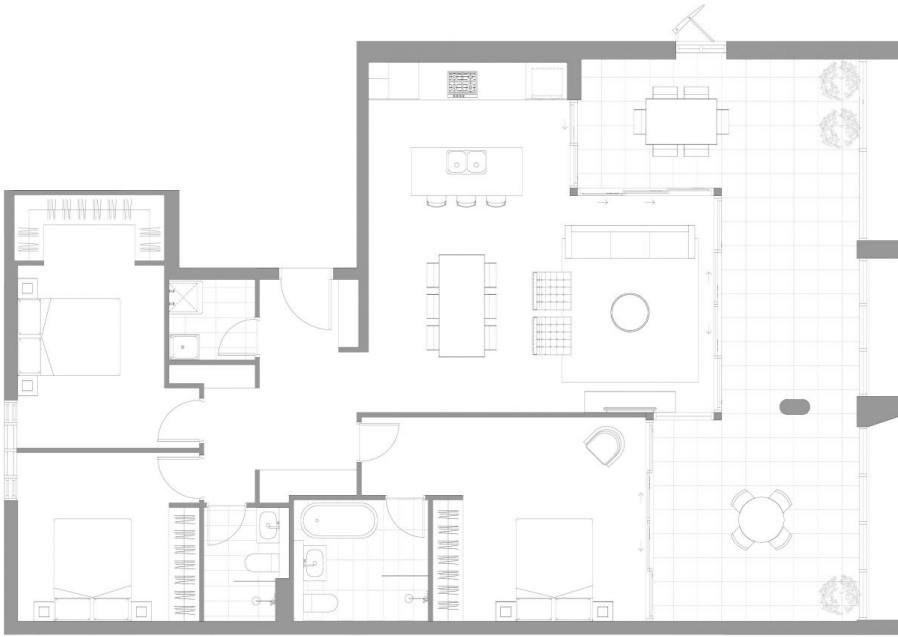


Joe/Jiangzhou Sun
1300 572 155



Fiona/Shuran Yang
0452 480 606

[For full version visit the website](https://www.plusagency.com.au)



Disclaimer: This layout plan was produced prior to construction and has been prepared for marketing purposes only. The information is believed to be correct but is not guaranteed. Changes may be made during construction and dimensions and areas are approximate only and together with the fittings and finishes are subject to change in accordance with the contract for sale. The position of the furniture and furnishings should not be taken to be indicative of final positions of power points, TV connection points and the like. Prospective purchasers must rely on their contract for sale for the list of inclusions. Bulkheads for services are not depicted. The purchaser must rely on the contract for sale.



SEYMOURS
RESIDENCES

APARTMENT

Unit 602

AREA

Total Strata Size: 193 m²

 3
  2
  2



1300 572 155

sales@plusagency.com.au



PLUS
AGENCY