

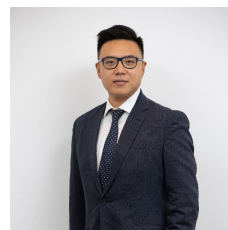
**607/1015 Pacific Highway Roseville NSW**

2 2 1

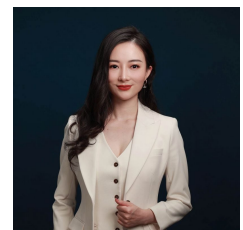
- Top floor apartment(level 6) with North facing aspect and district views
- Open plan lounge and dining with hardwood floors, shadow line ceilings, skylight and additional study bay
- Gas kitchen with 40mm stone bench tops, Miele appliances, feature cabinetry and breakfast bar
- Huge covered balcony accessed from both the master bedroom and the living area through double glass stacker doors
- Balcony offers podium tiling, lighting, tap, gas point and exposed brick feature wall
- Built in wardrobes in both bedrooms, two fully tiled bathrooms with recessed stone bench tops and feature tiles.
- Ducted reverse cycle air conditioning zoned for both

**Type** : Apartment

**View** : <https://www.plusagency.com.au/sale/nsw/north-s-hore-upper/roseville/residential/apartment/7514567>



**Joe/Jiangzhou Sun**  
1300 572 155



**Fiona/Shuran Yang**  
0452 480 606

[For full version visit the website](https://www.plusagency.com.au)



Disclosure: This layout plan was produced prior to construction and has been prepared for marketing purposes only. The information is believed to be correct but is not guaranteed. Changes may be made during construction and dimensions and areas are approximate only and together with the fittings and finishes are subject to change in accordance with the contract for sale. The position of the furniture and furnishings should not be taken to be indicative of final positions of power points, TV connection points and the like. Prospective purchasers must rely on their contract for sale for the list of inclusions. Bulkheads for services are not depicted. The purchaser must rely on the contract for sale.






**SEYMOURS**  
RESIDENCES

APARTMENT

Unit 607

AREA

Total Strata Size: 108 m<sup>2</sup>



  
 2+ Study      2      1



1300 572 155  
sales@plusagency.com.au



PLUS  
AGENCY