



216/80 Main Street Rouse Hill NSW

3 2 1

Instead of having to drive home, wouldn't you rather walk home after your grocery shopping at Woolworths (or Coles for that matter)?

This 3 bedroom + study home is located right across Woolworths, right next to the Rouse Hill Town Centre on 80 Main Street.

With private front courtyard access, you can go into your home direct from the street.

This is the one and only unit located directly right next to the Rouse Hill Town Centre.

Call/email us to organise an appointment to inspect this home today.

Disclaimer: This information has been obtained from our

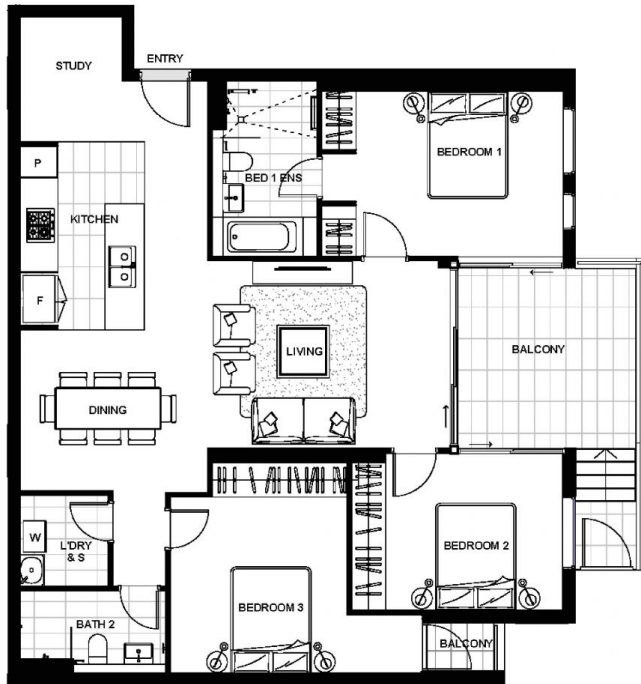
[For full version visit the website](https://www.plusagency.com.au)

Type : Apartment

View : <https://www.plusagency.com.au/sale/nsw/hills/rouse-hill/residential/apartment/7512600>



Plus Agency Sales



Disclaimer: This layout plan was produced prior to construction and has been prepared for marketing purposes only. The information is believed to be correct but is not guaranteed. Changes may be made during construction and dimensions and areas are approximate only and together with the fittings and finishes are subject to change in accordance with the contract for sale. The position of the furniture and furnishings should not be taken to be indicative of final positions of power points, TV connection points and the like. Prospective purchasers must rely on their contract for sale for the list of inclusions. Inclusions for services are not depicted. The purchaser must rely on the contract for sale.




APARTMENT


80 Main Street,
Rouse Hill, NSW

Unit 216

AREA

Total Strata Size: 136 m²




 3 + Study 2 1



THE BOULEVARD
ROUSE HILL - TOWN CENTRE

1300 572 155

sales@theboulevardproject.com.au

AUX
AUX PROPERTY