

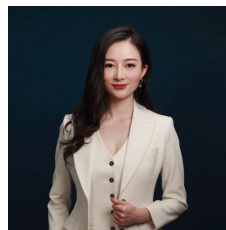


116 Bowden Street Meadowbank NSW

"Kingston Quarter" Shepherds Bay is the area's finest development offering a waterfront position, luxurious designer finishes and the most convenient access to Meadowbank's surrounds. Resort style grounds create a luxurious waterside playground with Train station, Ferry wharf and local buses all within a short walk.

- Generous bedroom with built-ins
- Balcony ideal for entertaining
- Great open plan layout
- Reverse cycle air-conditioning
- Secure car space
- Swimming pool and spa

View : <https://www.plusagency.com.au/sale/nsw/northern-suburbs/meadowbank/project/apartment/7506412>



Fiona/Shuran Yang
1300 572 155

Disclaimer: This information has been obtained from our sources we deem to be reliable. We make no