



G27/19 Dawes Avenue Castle Hill NSW

3 2 2

Welcome to 21-25 Dawes Avenue, Castle Hill, where the pinnacle of park side living awaits you. As the appointed master agency, Plus Agency and Notable Property Group are proud to present this exceptional apartment development delivered by the award-winning developer CG Group, renowned architect PTW, and landscape designer Urbis.

Project Features:

- The only project in Castle Hill with two internal gardens and three roof gardens, all overlooking the permanent park front
- Enjoy low strata costs
- Rest easy with the onsite builder warranty
- Experience culinary delights with SMEG appliances

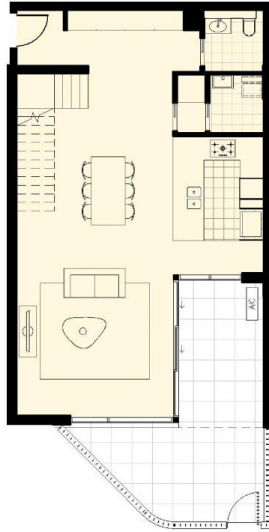
Type : Townhouse

View : <https://www.plusagency.com.au/sale/nsw/hills/castle-hill/residential/townhouse/7492247>

*Chapman
Gardens*

Chapman Gardens Project Marketing
1300 604 177

[For full version visit the website](https://www.plusagency.com.au)



Lower Level



Upper Level

Disclaimer: This layout plan was produced prior to construction and has been prepared for marketing purposes only. The information is believed to be correct but is not guaranteed. Changes may be made during construction and dimensions and areas are approximate only and together with the fittings and finishes are subject to change in accordance with the contract of sale. The position of the furniture and furnishings should not be taken to be indicative of final positions of power points, TV connection points and the like. Prospective purchasers must rely on their contract for sale for the list of inclusions. Buildroads for services are not depicted. All dotted line drawn in the floor plan is an indication of an allocated area, this does not constitute an actual room. The purchaser must rely on the contract for sale. Chapman Garden NSW Pty Ltd reserves the right to vary any aspect of the development at any time.

PARKFRONT

3 BEDROOM TOWNHOME

Unit G27

TOTAL AREA: 181m²



3



2.5



2



*Chapman
Gardens*

1800 906 688

chapmangardens.com.au

PTW

