



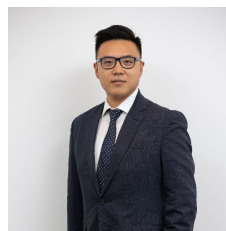
506/30 Alfred Street Milsons Point NSW

3 2 1

Aqualuna presents luxury living with floor-to-ceiling windows and sleek curved windows in the dining room that complement the precinct's calm environment and Harbour view. As they become one with the Milsons Point neighbourhood, which was just voted the second most liveable neighbourhood in Sydney in 2019, they are moments away from transportation, recreation, and luxury.

Located on Australia's beautiful Sydney Harbour, is a one-of-a-kind development that inspires high luxury living while being breathtakingly exquisite and spectacular in design. Premium finishes, Miele appliances, natural stone kitchens, timber flooring, and floor-to-ceiling windows are just a few of the features.

View : <https://www.plusagency.com.au/sale/nsw/north-s-hore-lower/milsons-point/residential/apartment/7492197>



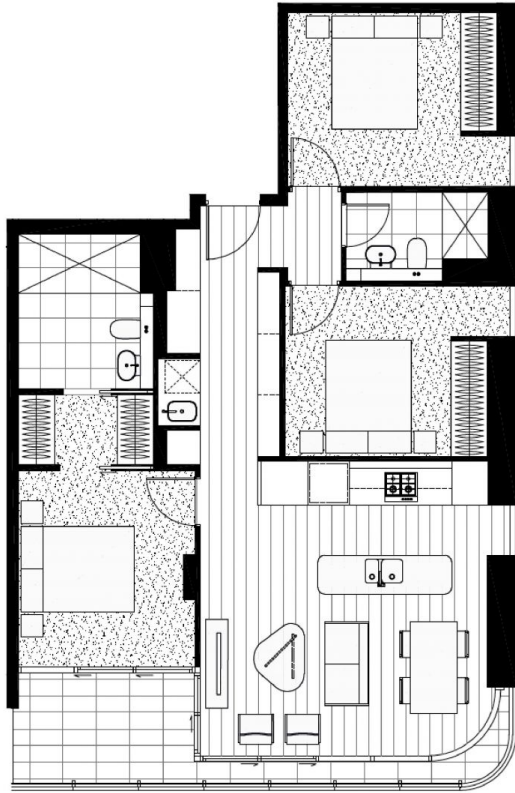
Joe/Jiangzhou Sun
1300 572 155



Stephenie Wong
1300 572 155

LOCATION & LIFESTYLE

- 130 metre walking distance to Milsons Point Ferry Wharf



PLUS
AGENCY

APARTMENT

506/30 Alfred St,
Milsons Point NSW 2061

AREA

Total: Approx. 113 m²



Disclaimer:
This plan is presented in good faith and is to be used as a guide. It does not constitute an offer or contract. All area sizes indicated are approximate only. Positions of furniture, fittings and the like are not indicative of final positioning.