



2/598-600 Old South Head Road Rose Bay NSW

3 **2** **2**

Hugging the harbour's shores, Rose Bay's welcoming village atmosphere and convenient location place it among the most desirable addresses in one of the world's greatest cities.

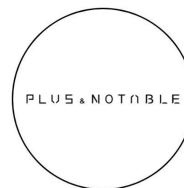
Each apartment opens to its own exclusive alfresco sanctuary, from private gardens to shady terraces, with floor-to-ceiling glass creating a seamless transition from the generous living spaces to your outdoor domain.

Perfectly positioned in the heart of Rose Bay, Candice gives you a front row seat to all that the prestigious Eastern Suburbs has to offer. Enjoy it all or retreat from it all amid Candice's ambient and secure surrounds.

Candice affords you the privilege of close proximity to the

[For full version visit the website](https://www.plusagency.com.au)


Type : Apartment
Price : Contact Agent
View : <https://www.plusagency.com.au/sale/nsw/eastern-suburbs/rose-bay/residential/apartment/7492189>



Sales Plus Notable
1300 572 155

CANDICE
ROSEBAY

GROUND
UNIT 2

3  2  2 

INTERNAL AREA 117.1 m²

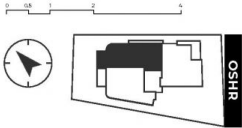
EXTERNAL AREA 43 m²

TOTAL AREA 161.1 m²

SUPERPRIME 

candicerosebay.com.au

1300 806 856



Introducing Rose Bay's most coveted new address. Inspired by their prestigious setting, Candice's nine beautifully crafted boutique residences exude a sophisticated sense of sanctuary. No expense has been spared in the creation of this ambitious project, encompassing a collection of breathtaking two and three bedroom apartments, garden residences and magnificent penthouses. A showcase of innovative architecture enhanced by a palette of elegant materials and bespoke interior detailing, these grandly proportioned residences deliver an unsurpassed calibre of workmanship and refinement.