



805/30 Alfred Street Milsons Point NSW

2 2 1

Introducing a new standard of luxury living in Milsons Point, Aqualuna' architecturally striking low-rise boutique building is peacefully nestled amid waterside of Harbour Bridge. You can enjoy the panoramic full water view as well as the iconic Luna Park and Harbour Bridge from the property.

Kitchen incorporate granite island benchtops, a combination of timber and neutral coloured joinery, brass plated tapware and quality Miele appliances. Bathrooms are beautifully finished with minimal aesthetic. In addition to the high quality custom brass plated tapware, there is abundance of storage and ambient LED lighting.

Designed to make the most of every corner aspect, the sophisticated interiors of Aqualuna's residence evoke a

Type : Apartment

View : <https://www.plusagency.com.au/sale/nsw/north-s-hore-lower/milsons-point/residential/apartment/7492162>

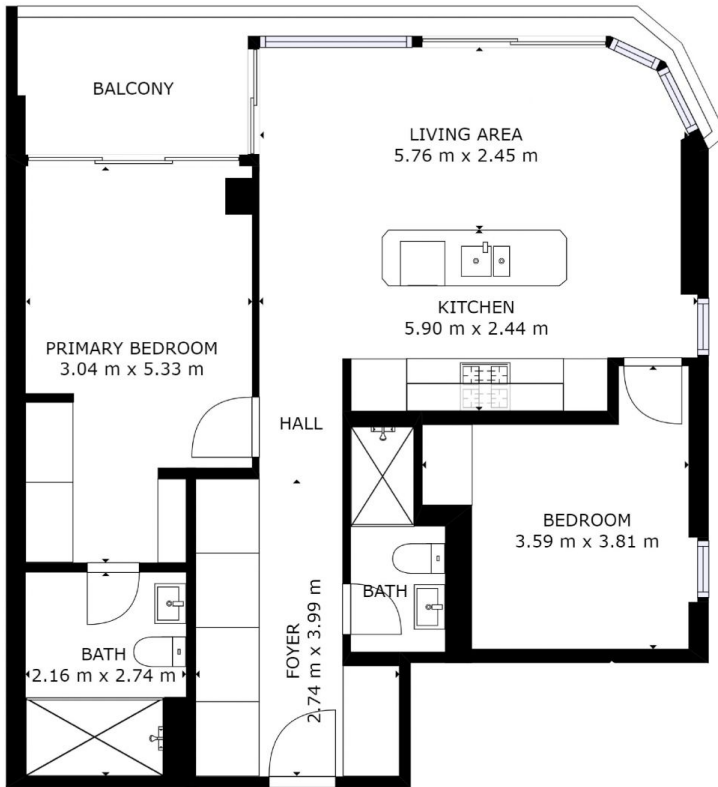


Joe/Jiangzhou Sun
1300 572 155



Stephenie Wong
1300 572 155

[For full version visit the website](https://www.plusagency.com.au)



PLUS
— REALTY AGENCY —

**APARTMENT
2 BEDROOMS**

805 / 30 Alfred St
Milsons Point NSW 2061

AREA

Total: Approx **83 m²**



Disclaimer:
This plan is presented in good faith and is to be used as a guide. It does not constitute an offer or contract. All area sizes indicated are approximate only. Positions of furniture, fittings and the like are not indicative of final positioning.