



5608/115 Bathurst Street Sydney NSW

2 🛏 2 🚗 1 🚗

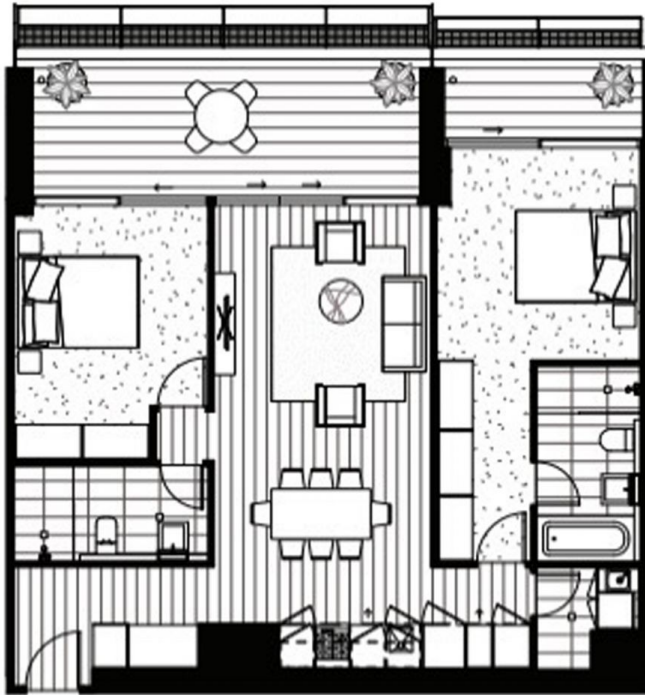
Right in the heart of Sydney CBD, this radiant 2-bed apartment presents brilliant modern living in a prime address within 'Greenland Center', a stunning cosmopolitan new development of luxury and effortless urban convenience. Set on the 56th floor of the building, its North Facing position affording it day-long sun and enviable views stretching across Sydney to the harbour, creating a haven of comfort that highly desired. An open plan living/dining area presents a large relaxed space opening fully to a large balcony which creates a vast zone perfect for a flexible array of uses. Residents can take full advantage of the five-star amenities and unbeatable lifestyle set above Sydney CBD's exciting restaurants, shopping districts and transport hub.

Building Size : 103 sqm
View : <https://www.plusagency.com.au/sale/nsw/sydney-city/sydney/residential/apartment/7492137>



Plus Agency Sales
1300 572 155

- The 235-metre skyscraper will be the tallest residential tower in Sydney's CBD



PLUS
AGENCY

Internal: 84m²
External: 19m²
Total: 103m²

5608 /115-119
Bathurst Street,
Sydney NSW2000



Disclaimer:
This plan is presented in good
faith and is to be used as a guide.
It does not constitute an offer or
contract. All area sizes indicated
are approximate only. Positions of
furniture, fittings and the like are
not indicative of final positioning.