



**1606/31 Belmore Street Burwood NSW**

2 2 1

Located on top of Emerald Square Burwood and connected to Burwood Plaza, which is an upmarket shopping centre with multiple restaurants/cafes & shops and footsteps away from Burwood Westfield offering even more variety. It is in the heart of Burwood in one of Sydney's inner west's most prestigious residential apartments.

This stylish and spacious, luxury 2 bedroom apartment is on the 16th floor and facing north. This contemporary home offers lifestyle and convenience with its generous sized bedrooms with built in wardrobes a modern ensuite and a private balcony. With an designer kitchen complete with an open plan layout that separates the living and dining areas, this apartment will tick all your boxes. Burwood Station is only a few mins walk away and with bus stops at your front

**Type** : Apartment

**View** : <https://www.plusagency.com.au/sale/nsw/inner-west/burwood/residential/apartment/7492084>

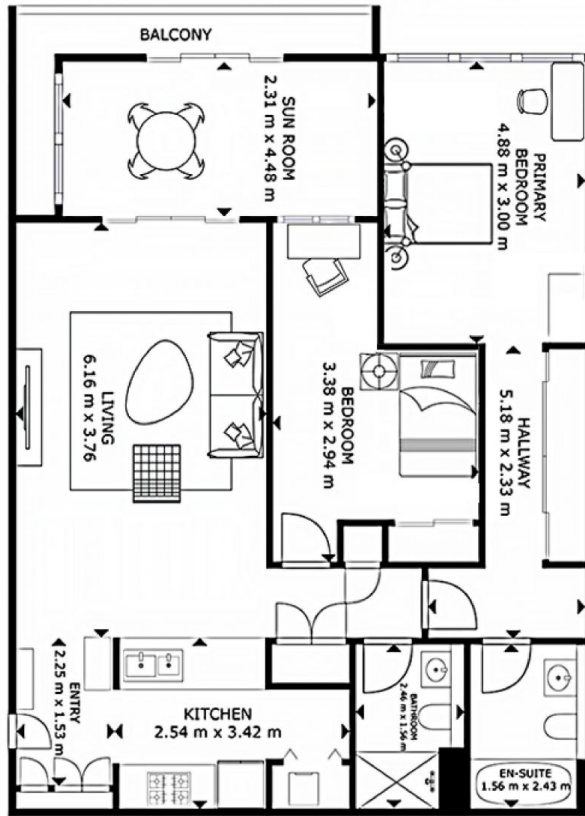
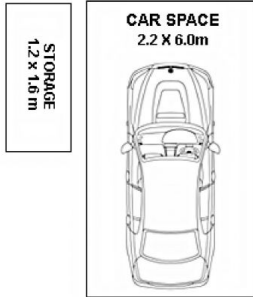


**Michael Liang**  
0433 091 038



**Roger/Li Zhu**  
0430 081 038

[For full version visit the website](https://www.plusagency.com.au)



**PLUS**  
AGENCY

**APARTMENT**

A1606/31 Belmore St,  
Burwood NSW 2134

**AREA**

Strata Area: 112 m<sup>2</sup>



Disclaimer:  
This plan is presented in good faith and is to be used as a guide. It does not constitute an offer or contract. All areas sizes indicated are approximate only. Positions of furniture, fittings and the like are not indicative of final positioning.